



**Environmental Impact Assessment
(EIA), Social Impact Assessment (SIA)
& Environmental Management Plan
(EMP) and Social Management Plan
(SMP) for Offshore Supply Base Nga
Yoke Kaung**

Disclosure Report

14 May 2018

ERM-Hong Kong, Limited

16th Floor, Berkshire House, 25 Westlands Road,

Quarry Bay, Hong Kong

Telephone 2271 3000

Facsimile 2723 5660

www.erm.com




Provision of Environmental Impact Assessment (EIA), Social Impact Assessment (SIA) & Environmental Management Plan (EMP) and Social Management Plan (SMP) for Offshore Supply Base Nga Yoke Kaung

Disclosure Report

Environmental Resources Management

16th Floor, Berkshire House,
25 Westlands Road,
Quarry Bay, Hong Kong
Telephone 2271 3000
Telephone: (852) 2271 3000
Facsimile: (852) 2723 5660
E-mail: post.hk@erm.com
<http://www.erm.com>

Document Code: 0385545_M&A_OSB_Disclosure Report

Client:		No:			
Myint & Associates Company Ltd.		0385545			
Summary:		Date:			
<p>This document presents the Disclosure Report for the Environmental Impact Assessment (EIA), Social Impact Assessment (SIA) & Environmental Management Plan (EMP) and Social Management Plan (SMP) for Offshore Supply Base Nga Yoke Kaung.</p>		14 May 2018			
		Approved by:			
					
		Craig A Reid			
		Partner			
1	Final to M&AOSB	MMS	AS	RS	14/05/18
Revision	Description	By	Checked	Approved	Date
		Distribution			
		<input type="checkbox"/> Public			
		<input checked="" type="checkbox"/> Government			
		<input type="checkbox"/> Confidential			
		 			

CONTENTS

1	INTRODUCTION	1-1
1.1	EIA DISCLOSURE'S OBJECTIVES:	1-1
1.2	KEY STAKEHOLDERS	1-2
2	DISCLOSURE PROCEDURE	2-1
2.1	DISCLOSURE WORKSHOP/FORUM IN YANGON HELD ON MARCH 8, 2018	2-1
2.2	DISCLOSURE MEETINGS IN AYEYARWADY REGION HELD ON MARCH 12 – 16, 2018	2-1
3	MEETING OF MINUTES	3-1
3.1.1	Meeting Minutes of Yangon Workshop	3-1
3.1.2	Meeting Minutes of Chief Minister in Ayeyarwady Region	3-8
3.1.3	Meeting Minutes of Patheingyi District GAD Office	3-11
3.1.4	Meeting Minutes of Vice-President of Parliament Office	3-13
3.1.5	Meeting Minutes of Ngathayau GAD Office	3-15
3.1.6	Meeting Minutes of CSOs at Patheingyi Hotel	3-18
3.1.7	Meeting Minutes of Nga Yoke Kaung GAD Office	3-24
3.1.8	Meeting Minutes of Nga Yoke Kaung Monastery	3-28
3.1.9	Meeting Minutes of Nant Thar Pu Village	3-31
3.1.10	Meeting Minutes of Parliament Meeting	3-37

ACRONYMS AND ABBREVIATIONS

Acronym	Definition
AOI	Area of Influence
CSO	Civil Society Organisation
CSR	Corporate Social Responsibility
EIA	Environmental Impact Assessment
M&A OSB	Myint & Associates Offshore Supply Base Ltd.
MIC	Myanmar Investment Commission
NGO	Non-Governmental Organisation
OHS	Occupational, Health and Safety
OGM	Operational Grievance Mechanism

This document is the EIA Disclosure Report for Myint & Associates Offshore Supply Base Ltd (M&A OSB).

Stakeholder engagement was conducted by **M&A OSB** and **Environmental Resources Management (ERM)** Hong Kong Ltd., who were engaged by M&A OSB to undertake the EIA Study for the Offshore Supply Base in Nga Yoke Kaung Bay. **Environmental Quality Management Co Ltd (EQM)** assisted ERM in the facilitation of meetings.

The scope of the EIA Disclosure meetings includes the EIA findings as well as an explanation of the associated Corporate Social Responsibility (CSR) and Operational Grievance Mechanism (OGM) of M&A OSB.

Public consultation in Ayeyarwaddy has previously been conducted as per the Myanmar EIA Procedure during the Scoping and EIA investigation stages which were defined in the EIA report.

These EIA disclosure meetings were held as a public forum at Vantage Tower in Yangon on March 8, 2018 with the different levels of related Government organisations, Non Government Organisations (NGOs), Civil society organizations (CSOs) and interest groups. Nine disclosure meetings were held in Patheingyi, Ngazun, Nga Yoke Kaung, and Nantgaru of Ayeyarwady Region from March 12 to 16, 2018. Stakeholders included NGOs, government officials, Parliament members, CSOs, and potentially affected communities within the Project's Area of Influence (AOI).

1.1 EIA DISCLOSURE'S OBJECTIVES:

The objectives of engaging stakeholders for EIA information disclosure include:

- **Ensuring Understanding:** An open, inclusive, and transparent process of culturally appropriate engagement and communication is undertaken to ensure that stakeholders are well informed about the EIA findings and any potential impacts and associated mitigation. Feedback is also provided to communities on how their concerns are taken into account in the EIA.
- **Involving Stakeholders in the Assessment:** Stakeholders are included in the scoping of issues, the assessment of impacts, and the development of mitigation and management measures in relation to M&A OSB activities and minimising negative impacts and maximising potential benefits from M&A OSB activities.

- **Building Relationships**: Through supporting an open OGM and providing a CSR programme which will strengthen the existing positive relationships between M&A OSB and stakeholders, such as, but not limited to, local communities, key government representatives, CSOs, and regional parliament members.
- **Engaging Potentially Affected People**: An open and inclusive approach to EIA's information disclosure consultation increases the opportunity of stakeholders to provide comments on any relevant M&A OSB activities and to voice their concerns.
- **Ensuring Compliance**: The process is well designed to ensure compliance with both local regulatory requirements and international good practice.

All engagement was conducted to the principles of free, prior, and informed consultation of stakeholders:

- Free: Engagement free of external manipulation or coercion and intimidation;
- Prior: Engagement undertaken in a timely manner,
- Informed: Engagement enabled by relevant, understandable, and accessible information including presentation of information in Myanmar language.

1.2

KEY STAKEHOLDERS

A stakeholder is defined as any individual or group potentially affected (positively or adversely) by M&A OSB activities, or who has an interest in M&A OSB activities and their potential impacts, and whose actions can impact or influence M&A OSB activities. The following stakeholders/stakeholder groups were identified as having an active role or a potential interest in the development of the proposed project:

- Government at the Regional, District, Township, Town levels;
- Parliament members;
- NGOs;
- CSOs;
- Other interest groups; and
- Residents in the villages within the Project's AOI.

Table 1.1 presents the various stakeholder groups and individuals participated in the disclosure meetings.

Table 1.1 Stakeholder Groups of EIA Disclosure

Type	Stakeholder Group - Level	Roles / Responsibilities /	Location
Government	Chief Minister and Minister of Ministry of Electricity, Energy, Industry and Transportation, Ayeyarwady Region	Chief Minister offices gives approval for the Project proponent to conduct stakeholder engagement at the Township and Village level.	Patheingyi
	Myanmar Investment Commission (MIC), Regional (Yangon and Ayeyarwady Region)		Yangon
	Myanmar Port Authority- National		Yangon
	Ministry of Natural Resources and Environmental Conservation (MONREC) through its Environmental Conservation Department (ECD)	This ministry is responsible for the administration of EIA Procedures (2015) of Myanmar (approval of M&A OSB's EIAs) as well as monitoring of ongoing environmental performance of M&A OSB operations. It is also responsible for monitoring the implementation of the M&A OSB operation.	Yangon, Patheingyi
	Myanmar Oil and Gas Enterprise- MOGE- National	MOGE oversees the development of Offshore projects and Offshore Supply Base projects. It communicates and coordinates with various levels of different government agencies for HSE-related issues at Offshore supply base.	Yangon
	Forest Department - Regional	The Forest Department will also monitor the replantation programme.	Yangon, Ngathayaw, Nga Yoke Kaung,
	Land-use Division, Department of Agriculture- Regional		Yangon

Type	Stakeholder Group - Level	Roles / Responsibilities /	Location
	Department of Fisheries	This department lies under the Ministry of Livestock, Fisheries and Rural Development of Myanmar. It is charged with promoting and increasing domestic production and consumption of livestock and fishery resources, controlling infectious diseases and zoonosis, ensuring livestock quality.	Ngaputaw, Nga Yoke Kaung
	Department of Information		Pathein
	Regional Secretary, General Administration Department (GAD), Ayeyarwady Region	The regional secretary issued the letter to Township GADs (Pathein and Nantharpu Township). He participated in the CM meeting.	Pathein
	District General Administration Department (GAD) at Pathein	The District GAD has been supporting M&A OSB's engagement process to date through, e.g. arranging meetings with stakeholders at Township level of Pathein and Ngaputaw.	Pathein
	Township General Administration Department (GAD) at Ngaputaw	The District GAD has been supporting M&A OSB's engagement process to date through, e.g. arranging meetings with stakeholders at Town level of Nga Yoke Kaung.	Ngaputaw
	Town General Administration Department (GAD) at Nga Yoke Kaung	The Township GAD has been supporting M&A OSB's engagement process to date, e.g. arranging meetings with stakeholders at village levels of Nantharpu Villages group	Nga Yoke Kaung
	Village Tract General Administration Department (GAD) at Nantharpu	The Township GAD has been supporting M&A OSB's engagement process to date, e.g. arranging meetings with stakeholders at Nantharpu village level.	Nantharpu
Local Community	Nantharpu Village group - Local	Nantharpu villages group is located around the project.	Nantharpu
CSOs	Biodiversity And Nature Conservation Association (BANCA)	This CSO is a partnership of Bird Life International and member of International Union for Nature Conservation (IUCN).	Yangon
	Myanmar Green Network		Yangon

Type	Stakeholder Group - Level	Roles / Responsibilities /	Location
	Myanmar Centre of Responsible Business (MCRB) – National	This CSO is about disclosure of project information and community engagement as well as EIA related to the project.	Yangon
	Ayeyarwady Integrated River Basin Management		Yangon
Company	Woodside		Yangon
	Bangkok Bank		Yangon
	Shwe Taung Co., Ltd		Yangon
NGOs	Ecosystem Conservation and Community Development Initiative (ECCDI)	This NGO is interested in the EIA process, including consultation.	Yangon
	Another Development (AD)	AD is a local policy think-tank and a non-profit organization set up to be part of the solution to the problems and conflicts in Myanmar by advocating effective public policy change.	Yangon
Media	Myanmar International TV (MITV) News		Yangon

To continue active engagement and provide meaningful feedback with stakeholders; the EIA Disclosure Engagement was undertaken for the Environmental Impact Assessment (EIA) of the Offshore Supply Base project. This was carried out by EIA consultants from ERM and M&A OSB personnel in various locations between March 8, 2018 and March 16, 2018.

2.1 DISCLOSURE WORKSHOP/FORUM IN YANGON HELD ON MARCH 8, 2018

As per the requirements of the Myanmar EIA Procedure, the draft EIA Report, including an Executive Summary in Myanmar language, was made available on M&A OSB's Website: <http://myintassociatesosb.com>. Hard copies of the Executive Summary were also distributed to Nga Yoke Kaung.

During the invitation process, all attendees were informed about where they could view the EIA Report.

Stakeholders such as NGOs and CSOs were invited via email, whilst Governmental Organisations were invited directly by way of invitation card, three (3) days before the date of workshop.

The invitation lists for Yangon Forum are provided in Annex 6(a).

2.2 DISCLOSURE MEETINGS IN AYEYARWADY REGION HELD ON MARCH 12 – 16, 2018

The stakeholders were informed by a notification in local newspapers in both English and Myanmar on February 17, 2018. The draft EIA report, including an Executive Summary of the EIA report in the Myanmar language, was also made available on M&A OSB's website: <http://myintassociatesosb.com> including contact details for inquiries or requests for further information.

The Executive Summary of the EIA report in Myanmar language, a factsheet including project information, and handouts were provided at the meetings.

In Ayeyarwady Region, nine meetings were held in Pathein, Ngaputaw, Nga Yoke Kaung and Nantharpu.

For approval of the holding of disclosure meetings at Township and village levels, an official letter was submitted to Chief Minister of the Ayeyarwady Region on March 8, 2018 and an appointment was made to meet with President of Ayeyarwady regional Parliament on March 5, 2018. See *Annex 6(c)*.

An approval letter was issued on March 12, 2018 by the Chief Minister and the consultation arrangement was conducted with District Administrators of the General Administration Department of Patheingyi. The holding of EIA Disclosure meetings in Ngaputaw, Nga Yoke Kaung and Nantharpu were arranged. Invitation cards were sent to the related government officers, CSOs and public communities.

The date, venue, and stakeholders who attended the meetings were recorded and are provided in *Table 2.1*.

The minutes of the Q&A sessions, attendance lists, and photos from the meetings are provided in *Section 3*.

The invitation lists and cards sent are provided in Annex A and the Presentation materials and factsheet used during the meeting are available in Annex B.

Table 2.1 *Schedule of M&A OSB EIA Disclosure Forum and Meetings*

No.	Date	Meeting Venue	Attendees
1.	8-3-2018	Vantage Tower, Yangon	MOGE, M&AOSB, MPRL E&P, ERM, ECD, Government Departments, Companies, NGOs and CSOs
2.	12-3-2018	Ayeyarwady Regional Government Office	Chief Minister, Minister and Government Departments, ERM, M&AOSB
3.	12-3-2018	Patheingyi District General Administrative Department	Patheingyi District Government Administrator, Government Departments, ERM, M&AOSB
4.	12-3-2018	Parliament of Vice President Office	Parliament of Vice President, ERM, M&AOSB
5.	13-3-2018	Ngathayau Township General Administrative Office	M&AOSB, ERM, Government Departments,
6.	13-3-2018	Patheingyi Hotel	M&AOSB, ERM, Government Departments, NGOs, CSOs, Media
7.	14-3-2018	Nga Yoke Kaung Township General Administrative Office	M&AOSB, ERM, Government Departments
8.	14-3-2018	Nga Yoke Kaung Township Monastery	M&AOSB, ERM, Locals and CSOs
9.	15-3-2018	Nantharpu Monastery	M&AOSB, ERM, Villagers, CSOs
10.	16-3-2018	Parliament Meeting Office	M&AOSB, ERM, Members of Parliament

The following section presents the minutes of the meetings, including Q&A sessions as well as photos and attendance lists from each meeting.

3.1.1 Meeting Minutes of Yangon Workshop

Detail	
Project	EIA Disclosure Workshop for Myint & Associates Offshore Supply Base
Venue	Vantage Tower
Township	Kamaryut Township, Yangon
Objective	EIA Disclosure Workshop
Date	March 8, 2018
Time	10:00 AM to 12:00 PM
Attendee List	41

Summary of Speeches:
<p><u>U Si Thu Zay Ya (Assistant HSE Manager) from MPRL E&P GOCs:</u></p> <ul style="list-style-type: none"> Explained about HSE facilities. Gave information on building structures including locations of emergency exits. Discussed procedure for evacuation including in case of emergencies. <p><u>U Tint Swe (Executive Director, Government & Public Affairs) from MPRL E&P GOCs:</u></p> <ul style="list-style-type: none"> Introduced MPRL E&P and Myint & Associates Company Ltd. MPRL E&P Company has found potential oil and gas 65 km offshore from the proposed Project. This offshore supply base will provide necessary materials and fuel as well as logistics and storage services for current and future oil & gas exploration and production activities in Myanmar. <p><u>Mr. Martijn Coopman (Project Director) from MPRL E&P GOCs:</u></p> <ul style="list-style-type: none"> Explained about site selection process. M&A OSB initially evaluated five potential sites for the OSB to serve the upcoming offshore oil & gas industry including Kyaukphyu, Nga Yoke Kaung Bay, Thilawa/Thaketa, Mawlamyine, and Dawei. Nga Yoke Kaung Bay was the preferred choice due to its location as it can serve most offshore oil and gas fields within a 24 hour response time. The criteria for selection included water depth, natural protection, and amount of maintenance and dredging required, onshore land availability, impact on locals, environmental impact, local transport and relative cost. Land availability is likely to be a decisive factor. <p><u>U Myo Zaw Thant (Senior Engineer) from MPRL E&P GOCs:</u></p> <ul style="list-style-type: none"> Discussed the site selection locations in more detail. The location is selected considering various technical parameters in bathymetry (water depth) and wave heights.

Summary of Speeches:

- Another factor of consideration is sediment data. Based on the survey results a close-type jetty structure was chosen.

Mr. Craig A. Reid (Country Manager) from ERM:

- Presented information on ERM.
- Discussed the applicable EIA Procedure and relevant legislation.
- Discussed the EIA Procedure, including the scoping and EIA phase, as well as work undertaken such as baseline surveys and public consultation.
- Presented summary of primary baseline data collection such as air quality, ambient noise, ground water quality, soil quality, seawater physio-chemical sampling, biology and biodiversity.
- In summary, the EIA identified no major impacts, with the majority being minor with the proposed mitigation measures.

Daw Kyisin Htin Aung (Corporate Affairs Manager) from M&A OSB:

- Explained that the Project is in its initial stage (prior to construction).
- Discussed the Grievance Mechanism that is currently in place since early 2017.
- Explained that should a grievance be communicated, the M&A OSB staff from the project site will investigate together with local community leaders, village leaders, and some authorities. After studying the situation the case would be registered.
- Explained about consideration of local community comments on the CSR strategy especially the communities' desire to have employment opportunities.
- Discussed the current CSR activities including a plan to support the education of the local community to provide needed skills and knowledge.
- Explained some other CSR measures including construction of middle schools for Nantharpu village.
- Discussed plans to implement next step in 2018 and 2019.

Discussion

Question: (U Sein Myint, Myanmar Green Network retired from government sector)

- Nga Yoke Kaung is a tourism site and this needs to be considered in terms of impacts from the Project.
- M&A OSB have the responsibility to get relevant permits. Presented experience with other company in which Myanmar lost taxes as company didn't get the required permits. Requested to provide capacity building and training to local communities to be qualified labourers for future employment opportunities.

Answer: (Mr. Martijn Coopman, Project Director (M&A OSB))

- Thank you very much for your questions.
- Tourism was key consideration and design of the Project was selected to reduce impact to the beach.
- We want to operate the base without any impact to local tourism. We will have fencing around the base, and workers will stay close to the base. This will reduce any impact to the communities. Some of the men and women from the villages could learn and trade from the workers at the base. I see only positive impact for the local villages.

Answer (U Thike Soe, M&A OSB)

Discussion

- We are aware of the tourism at Gawyangyi Island. In the site selection phase, we initially selected four areas with the aim of selecting the area with the least impact to local communities (in terms of fishing and tourism). Finally we selected the proposed area which is furthest from Gawyangyi Island. I would like to confirm that our offshore supply base won't affect the development of community based tourism.
- We had completed the required procedures, documents and taxes with the respective ministries and departments. We have been collaborating with respective ministries for any requirements for our project including the Ministry of Energy. As we have been planning to build a jetty, we have also been negotiating a contract with Myanmar port authorities (MPA) and ministry of transportation. For further new facilities and permits, we have been collaborating with related departments in required specifications. In addition, we have been negotiating with the customs department and ministry of finance. We will conduct all required procedures.

Additional Suggestions: (U Sein Myint)

- MOGE paid their taxes for the storage tanks for the Maday Island, Kyauk Phyu port project. MOGE's partner company paid the taxes after one and a half years therefore, MOGE seems weak in collaborating with its partners. Both sides (government and company) do not benefit if the project doesn't meet laws and standards of operating procedure.

Answer: (U Zayar Moe, Deputy Manager, MOGE)

- We implemented the Kyauk Phyu Port project under the previous government. In doing so, respective organizations such as the MPA, Marine transportation, ministry of transportation, Myanmar navy, and the MOGE etc. are included in the implementation of the project. We did not collaborate effectively with other organizations in the Kyauk Phyu project. So we are now collaborating with other organisations. I believe that this project will be successful if we see the examples of the Kyauk Phyu port as lessons learnt.
- We have a small supply base in Thakata Township that is not large enough to supply to the oil and gas exploration facilities. Therefore, we have to use the Ranong port which is in Thailand and ports in Singapore and Malaysia. Most of our country's foreign income goes to another country in this case.
- If this project is successful, our country will have a world class offshore supply base which can compete with other supply bases in Thailand, Singapore and Malaysia. This will increase foreign income and employment opportunities for local people. I would like to suggest that you give some training, for example welding training, to the local community youth.

Question: (U Win Min, MCRB)

- Asked about the EIA engagement, EIA consultation/social data and grievance mechanism.

Answer: (Mr. Craig, ERM)

- In Myanmar, the engagement stage and the consideration of social impact are actually a larger part of the EIA than the assessment of other environmental impact. In this stage of engagement, we treat the consultation of local people very seriously.

Answer: (Daw Myat Mon Swe, ERM)

Discussion

- There are three phases; the national level, regional level, and township (village) levels in our public consultation process. To identify the setting unit and study area, we consider the type of project and the local community situation at first. For example, in our assessment, we consider the inshore fishermen who usually fish within 10-30 miles from the beach rather than the offshore fishermen. This is because this project is near shore and we assume that its impact won't affect the offshore fishery. For this reason we selected the six villages in the coastal area for our study.
- We conducted consultation meetings during the scoping and EIA stage and collected socio-economic data collection and focus group discussion. There are three types of focus group discussions; fishermen focus group discussions, farmer focus group discussions, and women's focus group discussions. We have to consider the livelihood conditions of community when we establish the study area.

Answer: (Daw Kyisin Htin Aung, Corporate Affairs Manager)

- U Win Min said that the grievance redress mechanism is acceptable. This mechanism needs to be useable and accessible. We have set up various channels with site managers and site officers. If you don't like to contact directly, you can contact a local volunteer or you can contact the Yangon office directly via phone number displayed on the poster. We also support training around the Grievance Mechanism (GRM) to promote understanding.

Suggestion: (Daw Devi Thant Cin, Myanmar Green Network)

- Not only the government, but also the community should take responsibility. In Myanmar, we have no experience of these large ships. Investment companies and joint ventures should consider the Lat Pa Daung as an example. Without the EIA and foreign investment law, published in 2012, there are no rules for control. I would like to suggest that in order to address the impact of the project in case of government failure, the company should keep the systems in place. The impact assessment should cover the generation of dust from road construction activities and rock breaking which is the main issue on the project site.

Answer: (U Tint Swe, Executive Director, MPRL E&P GOCs)

- This project has potential to bring foreign income. The supply base is situated 65 km away from Nga Yoke Kaung. We also discussed with local people from Nga Yoke Kaung in the first consultation meeting.

Suggestion: (Daw Saw Mar Gay Htoo, Another Development)

- I find that M&A OSB is transparent. ERM has also complied with IFC and guidelines from ECD. If three prior concepts are added, this project will be positive, especially concerning local people.

Photos



Photos



Attendant List :

Sr.	Name	Organization/ Department	E-mail address	Contact Phone
1.	Daw Htay Myint	DOA/ Land Use Division	htay2myint85@gmail.com	09 444451784
2.	U Aung Soe Min	ERM	aungsoemin@erm.com	09 254451650
3.	Daw Myat Mon Swe	ERM	myatmon.swe@erm.com	09 420111902
4.	U Soe Min Naing	ECC DI	minsoen99@gmail.com	09 444451678
5.	U Tha Htu		thahtu@gmail.com	09 5013978
6.	Daw Khaing Shwe Wah	BANCA		
7.	Daw San Htwe	MRTV-News		09 5059903
8.	Daw Mya Tin Khaing	MRTV-News		
9.	U Win Htun	MRTV-News		
10.	U Kaung Set Moe	Shwe Taung Group	ksm.kaungsetmoe@gmail.com	09 965156050
11.	U Si Thu Mg	Shwe Taung Group		09 251042330
12.	U Sein Myint	MGN		09 421126447

Attendant List :				
Sr.	Name	Organization/ Department	E-mail address	Contact Phone
13.	Devi Thant Cin	MGN		09 2450211
14.	Pinieuwkerk	TOLL		09 417174041
15.	U Ko Lay	MITV		
16.	U Win Min	MCRB	win.min@myanmar-responsiblebusiness.com	09 953 428 351
17.	U Zayar Moe	MOGE	zeyarmoe9@gmail.com	09 5152368
18.	U Thein Toe	Forest Department	yangon.fd@gmail.com	09 5343237
19.	Daw Nandar Win	MNA	ndwin2011@gmail.com	09 5139682
20.	U Mg Htay	MPA	mngmghtay@gmail.com	09254285872
21.	Daw Hnin Thiri Lwin	Shwe Taung Group	hninthirilwin92@gmail.com	09 420068764
22.	Daw Thura Aung	REM	thura@enviromyanmar.net	09 5192143
23.	Daw Thiri Thein	ERM	thithi.thein@erm.com	09 73059830
24.	Martiyu	M&A OSB		09 97299519
25.	Mr. Craig Reid	ERM	craig.reid@erm.com	09 260016795
26.	Ms. Sarah Wai	MITV	sarahwai.mitv24@gmail.com	01 536956
27.	Daw Saw Mar Gay Htu	Another Development	sawmargayhtoo@gmail.com	09 261583401
28.	Daw Phyu Win Oo	Woodside	phyuphyu.winoo@gmail.com	09 2044023
29.	Carol Moet Aye	Another Development	carolaye24@gmail.com	09 5661506
30.	Aung Khaing Nyi	Shwe Taung Cement	aungknyi@shwetaungrealestate.com	09 977830269
31.	Daw Mazon Aung Thu	Shwe Taung Cement	mza.thu@shwetaungcement.com	09 977831342
32.	U Aung Naing Myo	AIRSMP	aungait@yahoo.com	09 964302748
33.	U Thet Shwe Aye	AIRSMP	thetsa@gmail.com	09 798527066
34.	Daw Chan Nyein Htet	ECD (Yangon)	channyeinh tet.99@gmail.com	09790877427
35.	U Si Thu Zay Ya	MPRL E&P GOCs		-
36.	U Tint Swe	MPRL E&P GOCs		-
37.	Mr. Mertijn Coopman	M&A OSB	martijn.coopman@myintassociatesosb.com	-
38.	U Thike Soe	M&A OSB		-
39.	U Myo Zaw That	M&A OSB		-
40.	Daw Kyi Sin Htin Aung	MPRL E&P GOCs	kyisin.h.aung@mprlexp.com	-
41.	U Myo Paing	MPRL E&P GOCs	myo.paing@mprlexp.com	-

3.1.2

Meeting Minutes of Chief Minister in Ayeyarwady Region

Detail	
Project	EIA Disclosure for Myint & Associates Offshore Supply Base
Venue	Ayeyarwady Regional Government Office
Township	Patheingyi Township, Ayeyarwady region.
Objective	EIA Disclosure
Date	March 12, 2018
Time	11:00 AM to 12:00 PM
Attendee List	14

The summary of presentations is provided in *Section 3.1.1*.

Discussion (Questions and Answers)
<p>Comment 1: U Aung Khaing Soe, Environmental Conservation Department</p> <ul style="list-style-type: none"> We have received the letter permitting the Environmental Compliance Certificate (ECC) for this project. We know that there have already been discussions about the program and how it will handle complaints (e.g. grievance mechanisms, CSR programs) in Yangon. In Tanintharyi, for the Dawei deep-sea port project this was also the case and it is better to implement these projects this way. According to EIA procedure, disclosure of EIA must be announced on websites for local stakeholders, CSOs, and others related persons within two weeks. This EIA is found to have skipped one step, based on the ERM presentation. This may be because of a delay in the English to Myanmar translation and other language problems. Everything else has been done in compliance with the guidelines and we have no separate comments or feedback.
<p>Comment 2: U Soe Aung, Myanmar Investment Commission (MIC)</p> <ul style="list-style-type: none"> Nay Pyi Taw MIC announced their permit letter in June 26, 2017 for this project. According to MIC laws, the project implementation report has to be submitted to MIC every three months. It is better to add the accomplishments of the EIA, SIA, CSR programs into this report. It is also necessary to address the President of the MIC, which means Union MIC. I would like M&A OSB to inform the regional government and regional MIC as well so we can easily explain the project to them. We have three offshore supply base projects including M&A OSB, SEM, and JMOE. Whilst conducting your CSR, it is important to keep in touch with local people and local surroundings. I received many questions concerning this project from journalists. For example; how will MIC handle issues that arise with the company's CSR strategy after the MIC permit? Generally, MIC used to handle the project after getting the permit from respective departments. But it has changed and now MIC handles the project first and then the related departments such as ECD process it accordingly. That is because companies want their construction periods to finish before the change of government. I know that M&A OSB only has a 28 month construction period.
<p>Comment 3: U Min Aung, Land Record Department</p> <ul style="list-style-type: none"> We presented the M&A OSB report to the regional land record committee according to the free land/wild land law. The land record committee has already guided the

Discussion (Questions and Answers)

process accordingly. We also guided the Township Land Record Department to implement the instructions. After implementation of the guide instructions, we will present the final report.

Comment 4: U Win Htay, Ministry of Electricity, Energy, Mechanical and Transportation

- JMOE is conducting their first initiative and they will meet regional governments and undertake public consultation. Many questions were asked in Hluttaw about this. If we undertake EIA, SIA and EMP continuously after getting the MIC permit then Myanmar seems to get many foreign direct investments (FDI). Concerning the M&A OSB project, the committee knows about the project because M&A OSB director and his groups have already presented it. I will try to announce in the Hluttaw in order to let all Hluttaw representatives know the project information.
- It is better not to construct a separate jetty. If a separate jetty is constructed, it will have an impact on the local fishery and local fishing boats (e.g. can local fishing boats pass under the jetty?). The company needs to implement the ERM's suggestions and findings. The main developer has the responsibility to do this and they are in charge of all sub-contractors to ensure compliance with the EMP. The grievance mechanism is a good resource for people to voice complaints. We have three Technological Universities (TU); Maubin, Hinthata, and Patheingyi and many graduates. I would like to request to create employment opportunities in the project for these graduates. Employment opportunities are higher in the construction phase and there may be a need for civil, mechanical and electrical engineers.

Comment 5: U Hla Moe Aung, Chief Minister

- If we create opportunities for our local graduates from the three Technology Universities, our new generation will gain confidence and their horizons will grow. I would like to request to implement this project. Our country is still developing and it is important to proceed with this project quickly and efficiently.

Photos



Photos



Attendant List :

Sr.	Name	Organization
1.	U Hla Moe Aung	Ayeyarwady Chief Minister
2.	U Win Htay	Minister of Electricity, Energy, Mechanical and Transportation
3.	U Than Swe Win	Regional administrator
4.	U Min Aung	Deputy regional officer(LRD)
5.	U Soe Aung	Regional Officer (MIC)
6.	U Kyaw Khaing Soe	Regional Officer (ECD)
7.	U Wai Phyoo Oo	Officer
8.	Daw Thi Aung	Deputy officer
9.	U Tin Swe	MPRL E&P GOCs
10.	Daw Kyisin Htin Aung	MPRL E&P GOCs
11.	U Myo Zaw Oo	MPRL E&P GOCs
12.	U Myo Zaw Thant	M&A OSB
13.	Daw Myat Mon Swe	ERM
14.	U Aung Soe Min	ERM

3.1.3

Meeting Minutes of Patheingyi District GAD Office

Detail	
Project	EIA Disclosure for Myint & Associates Offshore Supply Base
Venue	Patheingyi District General Administrative Department
Township	Patheingyi Township, Ayeyarwady region.
Objective	EIA Disclosure
Date	March 12, 2018
Time	3:00 PM to 3:30 PM
Attendee List	7

The summary of presentations is provided in *Section 3.1.1*.

Discussion (Questions and Answers)
<p>Question: (Daw Mi Mi Aung, Deputy Director, District Planning Department)</p> <ul style="list-style-type: none"> What percentage of this project's budget will go into Ngaputaw's private sector investment? <p>Response: (U Tint Swe, MPRL E&P GOCS)</p> <ul style="list-style-type: none"> We have to prepare the project completion report every three months. The Minister and an officer from MIC are also requested to submit the report to regional governments and related departments. We will try to present the report at the end of March. Our planned budget is USD 55 million. At present, we have invested USD 7 million in this project. I will present further detail in the report. <p>Suggestion: (Daw Mi Mi Aung, Deputy Director, District Planning Department)</p> <ul style="list-style-type: none"> Yes, I would like to request that you send us a copy of the report, if you send report to regional government and related departments. We need the data to calculate the GDP development of the region. <p>Comment: U Tin Aung Win (District Officer, Land Record Department)</p> <ul style="list-style-type: none"> We have already clarified that the farm land cannot be permitted by central committee at present, and that garden land is fine. We presented the information for beach land and other types of land to the central committee according to procedures. This will have reached the township level and they will proceed accordingly soon. <p>Response: (U Tint Swe, MPRL E&P GOCS)</p> <ul style="list-style-type: none"> MPRL E&P Company has found oil and gas in the Block A-6 area, which is 65 km from the proposed offshore supply base. We intend, together with MOGE, to extract oil and gas by 2023. So in order to make our target, a main requirement for us is the offshore supply base. We are planning to finish the construction of OSB by 2020 and this will support offshore vessels in Ayeyarwady and Rakhine regions. We want to develop a world-class offshore supply base near Nga Yoke Kaung bay in Ngaputaw Township in Ayeyarwady region and deliver logistics services to the offshore oil and gas industry in Myanmar. <p>Question: (Daw Mi Mi Aung, Deputy Director, District Planning Department)</p> <ul style="list-style-type: none"> How about employment opportunities for this region?

Discussion (Questions and Answers)

Answer: (U Tint Swe, MPRL E&P GOCS)

- The Chief Minister of Ayeyarwady region said that regional governments would collect the lists of graduates from three Technological universities. We then have to create employment opportunities for them. Most graduates have limited opportunities due to the lack of projects. We have planned to interview the graduates from this region and give jobs to qualified people. We are planning to start our project in January 2019.

Photos



Attendant List :

Sr.	Name	Position
1.	U Aung Cho	Director
2.	Daw Mi Mi Aung	Deputy Director
3.	U Tin Aung Win	District officer (Land Record Department)
4.	U Tin Swe	MPRL E&P GOCS
5.	Daw Kyisin Htin Aung	MPRL E&P GOCS
6.	U Myo Zaw Thant	M&A OSB
7.	Daw Myat Mon Swe	ERM

3.1.4

Meeting Minutes of Vice-President of Parliament Office

Detail	
Project	EIA Disclosure for Myint & Associates Offshore Supply Base
Venue	Parliament of Vice President Office
Township	Patheingyi Township, Ayeyarwady region.
Objective	EIA Disclosure
Date	March 12, 2018
Time	3:45 PM to 4:45 PM
Attendee List	6

The summary of presentations is provided in *Section 3.1.1*.

Discussion (Questions and Answers)

Comment: (Parliament of Vice President)

- Many companies are coming and conducting surveys in the region and they have since disappeared. A hluttaw representative suggested that there is a need to send committed investors to the Nga Yoke Kaung region. The land prices are rising because of these surveys and may, in future become too expensive for investments.

Response: (U Tint Swe, MPRL E&P GOCS)

- Our company has a well-supported case. In 2007, we had an agreement with MOGE for operation of the offshore Block A-6 in Rakhine for 5 years. In 2012, we found oil and gas in the Pyi-Thar well in shallow water depth. Similarly, oil and gas existence was found in Shwe-yee-tun well in 2016, and in Pyi-tharyar and Pyi-thit wells in 2017. We have provided our findings to U Man Jonny, former chief minister and mister U Win Htay at that time.
- MPRL E&P Company has found oil and gas in the Block A-6 area, which is 65 km from the proposed offshore supply base. We intend, together with MOGE, to extract oil and gas by 2023. So, to make our target, a main requirement for us is the offshore supply base. We are planning to finish the construction of OSB by 2020 and this will support offshore vessels in Ayeyarwady and Rakhine regions.
- We want to explain the EIA to local communities, local NGOs, CSOs and government authorities and media. After this meeting, we will go and meet with the deputy hluttaw president. We will have further meetings in Ngaputaw Township and the Patheingyi hotel. We would like to request to proceed with our meetings. We have also planned to hold meetings in Nga Yoke Kaung Township and in Nan Ta Pu Village.

Comment: (Parliament of Vice President)

- When you have a public consultation in the villages, what is their feedback? Other villages are wondering why the meetings are always held in Nanttharpu? Why don't you have meetings in other villages? Many of the people have experienced many meetings and surveys in this area. I received many letters from Nga Yoke Kaung region about this and similarly, the hluttaw representatives are concerned with these issues.
- U San Min Aung shared his experience of an old coal project in Nga Yoke Kaung region and explained Daw Nant Cho Pyone's performances in most of the meetings. He shared his experiences concerning public disclosure in many investments.

Discussion (Questions and Answers)

Response: Daw Myat Mon Swe (ERM),

- Shared similar experiences concerning public consultation in Nan Ta Pu village.

Comment: (Vice President of Parliament)

- I would like this information explained to our Hluttaw representatives including the Hluttaw president. After the meeting, I may know whether all Hluttaw representatives agree on this project or not.
- He explained the challenges of Ayeyarwady region and that Ayeyarwady regional governments are expecting to get more investment and that investments are welcome. He requested that all of this information is distributed to all Hluttaw representatives.

Attendant List :

Sr.	Name	Organization
1.	U San Min Aung	Parliament of Vice President
2.	U Tin Swe	MPRL E&P GOCs
3.	Daw Kyisin Htin Aung	MPRL E&P GOCs
4.	U Myo Zaw Oo	MPRL E&P GOCs
5.	U Myo Zaw Thant	M&A OSB
6.	Daw Myat Mon Swe	ERM

3.1.5

Meeting Minutes of Ngaputaw GAD Office

Detail	
Project	EIA Disclosure for Myint & Associates Offshore Supply Base
Venue	Township General Administrative Office
Township	Ngaputaw Township, Ayeyarwady region.
Objective	EIA Disclosure
Date	March 13, 2018 (Tuesday)
Time	11:00 AM to 1:15 PM
Attendee List	38

The summary of presentations is provided in *Section 3.1.1*.

Discussion (Questions and Answers)
<p>Question: (U Kyaw Aye, member of Township Development Committee)</p> <ul style="list-style-type: none"> How does M&A OSB plan to be responsible for the health of the local community? <p>Answer: (Daw Myat Mon Swe, ERM)</p> <ul style="list-style-type: none"> A health and safety management plan is already included in the Environmental Management Plan (EMP). <p>Answer: (U Myo Zaw Thant, Senior Engineer)</p> <ul style="list-style-type: none"> We will have a Health and Safety Management plan for our project site in case an accident should occur. We will install a clinic in the project to provide healthcare for personnel working in the supply base and we will also consider the healthcare of the local community. We plan to give assistance to the local community as much as we can. <p>Answer: (U Tint Swe, Executive Director of M&A OSB)</p> <ul style="list-style-type: none"> We prioritise health and safety in all of our projects. Our project is still in its initial phase, we do not have any facilities yet. We have a health and safety management plan for Mann Field and our offshore block A-6. If you are in Yangon, please come and visit our office, and we can show you how we plan our health and safety. We always have safety presentations before every meeting in order to explain our health and safety plan. We also consider the health of the local community in our CSR program. Since we applied for the permit at MIC, we have already agreed to a commitment to apply for 3% of profit to the CSR program. We are promoting education as the first priority of CSR. At the start our project, we will have 80 labourers from M&A OSB and may need more than 200 labourers for the initial phase. For the main construction phase, we will need 400-700 labourers.

Photos



Attendant List :

Sr.	Name	Position/Organization
1.	U Kyaw Swe Win	Administrator (township administrative department)
2.	U Myo Win	Township Officer (Police)
3.	U Htay Hlaing	Executive officer (Township Development Committee)
4.	U Soe Win	Township officer (Education)
5.	U Kyaw Thu Min	Assistant Director (Rural Development)
6.	Daw Nan Shoon Le	Township court
7.	U Nay Min Aung	Township Lawyer

Attendant List :		
Sr.	Name	Position/Organization
8.	Daw Aye Aye Myint	Township Officer (Township Cooperative)
9.	U Win Soe Oo	Township Officer (Agricultural Department)
10.	U Soe Myint Aung	Township Officer (Veterinary)
11.	U Pyone Naing	Township Officer (Forest Department)
12.	Daw Nwe Nwe Soe	Township Officer (Planning Department)
13.	Dr. Soe Sandar Lwin	Township doctor (Health Department)
14.	Daw Than Than Aye	Township Officer (Township Statistical Department)
15.	Daw Zin Min War	Township Officer (Tax Department)
16.	U Min Aung	Officer (Township Fire Service)
17.	U Tun Min	Officer (Department of Irrigation)
18.	U Tun Tun Win	Officer (Township farmland Department)
19.	Daw Khin Lay Myint	Officer (Post office)
20.	U Htet Lin Tun	Officer (Micro wave)
21.	U Myat Soe Aung	Township Officer (Electrification department)
22.	U Win Naing Soe	Township Officer (immigration department)
23.	Daw Khin Thandar Soe	Officer (Township sport)
24.	Daw Khin Aye Maw	Township Manager (Myanmar Economic Bank)
25.	Daw Nu Nu Aye	Deputy officer (Township Information Department)
26.	U Tun Tun Oo	Township Officer (Department of Fishery)
27.	Daw Myint Myint San	Officer (Department of Consumers)
28.	Daw Ye Ye Swe	Manager (Myanmar Farmer Development Bank)
29.	U Aung Zaw Win	Officer (Township Religious department)
30.	U Tin Oo	President (Township development committee)
31.	U Kyaw Aye	Member (Township development committee)
32.	U Hla Win Htut	Reporter
33.	U Tin Swe	MPRL E&P GOCs
34.	Daw Kyisin Htin Aung	MPRL E&P GOCs
35.	U Myo Zaw Oo	MPRL E&P GOCs
36.	U Myo Zaw Thant	M&A OSB
37.	Daw Myat Mon Swe	ERM
38.	U Aung Soe Min	ERM

3.1.6

Meeting Minutes of CSOs at Pathein Hotel

<i>Detail</i>	
Project	EIA Disclosure for Myint & Associates Offshore Supply Base
Venue	Pathein Hotel
Township	Pathein Township, Ayeyarwady region.
Objective	EIA Disclosure
Date	March 13, 2018
Time	3:00 PM to 5:00 PM
Attendee List	41

The summary of presentations is provided in *Section 3.1.1*.

<i>Discussion (Questions and Answers)</i>
<p>Question: (U Kyaw Min Soe, retired professor from Hinthata University)</p> <ul style="list-style-type: none"> How have you created a Biodiversity Action Plan for this project? Secondly, if oil and gas can be produced, how can our country and local community profit? <p>Answer: (Daw Myat Mon Swe, ERM)</p> <ul style="list-style-type: none"> The replantation action plan will be implemented for removed species. <p>Answer: (U Tint Swe, Executive Director, MPRL E&P GOCs)</p> <ul style="list-style-type: none"> This is different from the Yadanar oil and gas example. The drilling cost of one well is between USD 70 and 90 million. We are the operator. We are contracted under the MOGE and the government will plan how we move forward. If gas comes out at 550 cubic feet million per day in 2023-24, it will be beneficial to the country.
<p>Question: (Ko Naing Oo, MATA, Phyu Sin Myittar)</p> <ul style="list-style-type: none"> How many local people were included in the EIA study group? How long did the EIA field study take? How many international experts were included in this EIA? How much will the EMP cost? How long will the international EIA take? <p>Answer: (Daw Myat Mon Swe, ERM)</p> <ul style="list-style-type: none"> In the EIA process, scoping stage takes 3 months and an EIA investigation takes 6 months. In total, 9 months. It will take 9 to 12 months for an International Environmental Impact Assessment (EIA). In the scoping phase, there are two groups; the social team and the baseline team. I led the social team and we worked together with Resource and Environmental Management (REM) and Flora and Fauna International (FFI). WCS was also included. We have international social and biodiversity experts within ERM who have provided the methodology for the survey. ERM is a Hong-Kong Based Company. Once the EIA is completed we then have to submit it to ECD.

Discussion (Questions and Answers)

- The costs for an EMP vary dependant on the type, location, distance, and situation of the project.

Question: (Ko Phoe Pauk, AYA MATA)

- ERM is a company or department? Who is the owner of ERM? Is there a clear and reliable relationship between M&AOSB and ERM? Who will take responsibility if the CSR strategy finds that the EIA procedure is not in compliance with typical standards?

Answered by Daw Myat Mon Swe (ERM)

- There is no relationship between M&AOSB and ERM. We don't have any chances to choose a third party. ERM is a company organized by 160 offices in 40 different countries. If the CSR strategy finds that the EIA procedure is not in compliance with typical standards, the company will amend the strategy.

Question: (U Naing Lin Htut, MATA)

- Who will be responsible if there is a change in wave direction and any damage to natural beauty and scenery?
- I wonder how the company will take responsibility if there is an accident such as a leakage of oil and gas from damaged pipelines.
- It is necessary that the potentially affected people participate in this meeting so that the CSR strategy can be explained to them.
- How will the assessment performance be able to cover the whole coastal area if the assessments are conducted in only two villages?

Answered: (U Myo Zaw Thant, Senior Engineer)

- However in the unlikely event of erosion the remedial measure like sand nourishment is taken into consideration from the beginning.
- If there is an accident on this project such as a leakage of oil and gas, an emergency response plan will be implemented and actions taken immediately.

Answered: Daw Kyisin Htin Aung (Corporate Affairs Manager)

- Regarding public awareness about the strategic CSR. The CSR program was held in 2018 inviting the ten-households.

Answered by Daw Myat Mon Swe (ERM)

- The baseline survey has been designated in accordance with calculations based on map data.

Question: U Soe Hlaing Oo, 88 Pwint Lin)

- Although said that offshore drillings are aimed for the national development, we want to know how to use the produced Oil and Gas and what it is for, and then how to cooperate for the marketing ratio between Nation and Company, there is no market available now and they don't know how much it will be used locally, how much will be sold out abroad and which countries will buy it. When making the contract between international companies and

Discussion (Questions and Answers)

MOGE for drilling, the company's rights has to be described in that contract. So could you share the investment ratio for the transparency of information to the public?

Answered by U Tint Swe (Executive Director)

- More transparency and national development for the public's concerns are more of a Role of Union Government than a company I think. As an example, Mann Oil Field has a Performance Compensation Contract (PCC). On all onshore and offshore projects, the government gets 92% of the benefit and only 8% is for the company.
- If we find gas or oil from one exploration drilling well out of four drilling wells, we can say we are successful.
- It is difficult to do business in Myanmar. In the ease of doing business list, Myanmar ranks 171 out of 190 countries. I have heard that our government is doing their best to climb up 10 ranks.
- We will need to discuss with about 20 ministries about the suggestions from this workshop. We need to listen to the suggestions from various points of view.

Photos



Introduction by U Tint Swe, Executive Director



Explanation by U Myo Zaw Thant, Senior Engineer



Explanation by Daw Myat Mon Swe, Senior consultant, ERM



Explanation by Daw Kyisin Htin Aung, Cooperate Affairs Manager



Question 1



Question 2

Photos



Question 3



Question 4



Question 5



Attendants of the Meeting at Pathein Hotel



Interview session with Media



Interview session with Media

Attendant List :

Sr.	Name	Position
1.	U Ngwe Htun	Department of Communication and Information Technology
2.	U Kyaw Min Soe	MATA (AYY)
3.	U Mg Mg Mya	

Attendant List :		
Sr.	Name	Position
4.	U Soe Myint Soe	Myanmar Times
5.	U Mg Mg Soe	Myawadi
6.	Daw Hnin Nu Win	Regional education
7.	U Soe Thein	Sky net
8.	U Naing Min Htet	Sky net
9.	U Than Htun Naing	Phyu Sin Myittar
10.	U Khin Nyunt	88/ Nyein/pwint MATA
11.	U Sithu Mg Mg	Mizzima
12.	U Zaw thint	The Voice
13.	Ye thaw ei	MCN
14.	Ko Myo Zaw	MATA
15.	Dr. Aung Kyaing	MATA
16.	U Khin Zaw	ESE
17.	U Aung Khine Soe	ECD
18.	Ko Moe	MATA
19.	Soe Hlaing Oo	88 Generation /pwintlin
20.	Zar Zar Win	Ayeyarwady youth network
21.	U Myint Soe	MATA
22.	U Aung Cho	Patheingyi District GAD
23.	U San Lwin Oo	MATA
24.	U Myo Myin Kyaw	MRTV.NRC
25.	U Kyaw Myo Htet	MRTV.NRC
26.	U Htun Zaw Naing	SB
27.	Min Thu Win Htut	Eleven Media
28.	Daw Aye Aye Maw	Regional education
29.	Daw Mi Mi Aung	District Planning Department
30.	U Thaw Zir Myo	DVB
31.	U Naing Linn Htut	MATA
32.	Daw Nan Aye Aye Khaing	Ayeyarwady youth network
33.	U Nyein Myint	Ga yu nar CSOs
34.	U Aung Bo Bo Htet	MATA AYA
35.	U Soe Zaw latt Myint	MATA CO
36.	U Tin Swe	MPRL E&P GOCs
37.	Daw Kyisin Htin Aung	MPRL E&P GOCs
38.	U Myo Zaw Oo	MPRL E&P GOCs
39.	U Myo Zaw Thant	M&A OSB
40.	Daw Myat Mon Swe	ERM
41.	U Aung Soe Min	ERM

Detail	
Project	EIA Disclosure for Myint & Associates Offshore Supply Base
Venue	Township General Administrative Office
Township	Nga Yoke Kaung Township, Ayeyarwady region.
Objective	EIA Disclosure
Date	March 14, 2018 (Wednesday)
Time	1:00 PM to 3:00 PM
Attendee List	35

The summary of presentations is provided in *Section 3.1.1*.

Discussion (Questions and Answers)
<p>Question: (U Than Nyunt, Local people from Nga Yoke Kaung Township)</p> <ul style="list-style-type: none"> • After submitting the EIA report, will the environmental impact assessment continue? • Are there plans for job opportunities in the local communities? <p>Answer: (Daw Myat Mon Swe, ERM)</p> <ul style="list-style-type: none"> • After submitting the EIA for review to ECD (MONREC), a group which includes representatives from 15 ministries. A 3rd party International consultant group from the Norway environment agency (NEA) analysed the EIA and had a review meeting to make comments. These comments instructed additional surveys or amendments etc. to be applied to the EIA. We revised our EIA in compliance with those comments and submitted again to ECD. Meanwhile, we continuously collected local people's concerns and potential impact through EIA disclosure and public consultation. We presented the public concerns and detailed the mitigation measures required and potential impacts in the review meeting. After this process and the 15 ministries (including Law, Fishery and ECD) are satisfied with the EIA study, we will submit the revised EIA version. The Environmental Compliance Certificate (ECC) will be gained if all authorities are satisfied. After getting the ECC the project proponent will then proceed with the project accordingly. <p>Next question: Is ERM supervising the air and noise and monitoring along the whole project period? ERM has already studied air, water, and soil pollution, why is it not finished?</p> <p>Answer: (Daw Myat Mon Swe, ERM)</p> <ul style="list-style-type: none"> • In the EIA, there is the environmental management plan (EMP) which includes the emergency response plan and monitoring plans etc. According to EMP, the project proponent will have to conduct monitoring every 6 months by hiring a third party (which could be ERM). After this, they will submit a monitoring report to the related department. The ECD will investigate whether all monitoring is done in compliance with EMP. If not found in compliance, the inspection team will pay penalties including possible closing of the project according to law.

Discussion (Questions and Answers)

Answer: (U Tint Swe, Executive Director, MPRL E&P GOCs)

- At the start of our project, we will have 80 labourers from M&A OSB and may need more than 200 labourers for the first phase. For the main construction phase, we will need 400-700 labourers. Concerning the employment opportunities of this project, we will use local people. We focused on education in order to improve skill development through our CSR programs. We will run this project as a 30 year (long-term) project. The Chief Minister of Ayeyarwady region has said that regional governments would collect the lists of graduates from three Technological universities. We then have to create employment opportunities for them. Most graduates have limited opportunities due to the lack of projects. We have planned to interview the graduates from this region and give jobs to qualified people. We are planning to start our project in January 2019. Although we would like to start this for our project, we are waiting to get the ECC for the project.

Comment: (Daw Myat Mon Swe, ERM)

- According to the officer from department of fishery, the DOF restricted offshore fishing on May 16 to August 15, 2018. This is new information for us.

Photos



Photos



Attendant List :

Sr.	Name	Position
1.	U Pyae Phyo Paing	Administrator (Nga Yoke Kaung Township)
2.	U Tun Ngwe	
3.	U Zaw Win	
4.	U Kyin Aung	
5.	U Thein Htay	
6.	U Nyunt Soe	
7.	U Myo Thuya Zaw	Assistant officer (department of fishery)
8.	U Maung Maung	
9.	U Myint Soe	
10.	U Maung Maung Lwin	Department of Highway
11.	U Myo Myint	
12.	U Lin Lin	Ward (2) administrator
13.	U Zaw Min Oo	Kywe Gyaing administrator
14.	U Wint Nyunt	Kywe Gyaing
15.	U Kyaw Htay	Moe Dain Pyin administrator
16.	Dw Kyaw Marlar Lwin	Deputy officer
17.	U Phyo Wai Soe	Nan Tar Pu
18.	U Thant Zin Hlaing	Second supervisor (electricity)
19.	U Set Minn Oo	Executive officer (Township development committee)
20.	U Myo Zaw Aung	Sabagyi
21.	U Than Nyunt	Nga Yoke Kaung
22.	U Hla Kyaing	
23.	U Phone Lwin	
24.	U Soe Lwin	Township officer (land record department)
25.	U Kyaw Swar Htun	Township Officer (Agriculture)
26.	Daw Ni Ni Win	Post Officer
27.	U Than Htay Aung	Officer (Firestation)
28.	U Shwe Aung	Policeman

Attendant List :		
Sr.	Name	Position
29.	U Thuya	Nga yoke kaung
30.	U Tin Swe	MPRL E&P GOCs
31.	Daw Kyisin Htin Aung	MPRL E&P GOCs
32.	U Myo Zaw Oo	MPRL E&P GOCs
33.	U Myo Zaw Thant	M&A OSB
34.	Daw Myat Mon Swe	ERM
35.	U Aung Soe Min	ERM

Detail	
Project	EIA for Myint & Associates Offshore Supply Base
Venue	Monastery
Township	Nga yoke kaung Township, Ayeyarwady region.
Objective	EIA Disclosure
Date	April 3, 2018 (Wednesday)
Time	3:30 PM to 5:00 PM
Attendee List	35

Discussion (Questions and Answers)

Question: (Villager)

- How about job opportunities for graduates from the local community. Are there any detailed plans for employment opportunities?

Answer: U Tint Swe, (Executive Director, MPRL E&P GOCs)

- At the start of our project, we will have 80 labourers from M&A OSB and may need more than 200 labourers for the first phase. For the main construction phase, we will need 400-700 labourers. Concerning the employment opportunities of this project, we will use local people. We are focused on education in order to improve skill development through our CSR programs. We will run this project as a 30 year (long-term) project. The Chief Minister of Ayeyarwady region has said that regional governments would collect the lists of graduates from three Technological universities. We then have to create employment opportunities for them. Most graduates have limited opportunities due to the lack of projects. We have planned to interview the graduates from this region and give jobs to qualified people. We are planning to start our project in January 2019. Although we would like to start this for our project, we are waiting to get the ECC for the project.
- Moreover, we would like to request the trust of the community.

Replied by Local Villagers

- We are willing to trust the information is correct. So please implement this project.

Photos



Attendant List :

Sr.	Name	Position
1.	U Soe Maung	Villager
2.	U San Myint	10 HH leader
3.	U Myint Aung	Villager
4.	U Aung Kyaw Myint	Township development committee
5.	U Hla Kywe	Villager
6.	U Hla Myint	Villager
7.	U Than Nyunt	Villager
8.	U Hla Soe	14/ nga pa ta (N) 082536
9.	U Zaw Myo Oo	14/ ma ma na(N) 206385
10.	U Than Aung	Villager
11.	U Kyaw Khin	Villager
12.	U Zaw Win	Villager
13.	U Myint Shwe	Villager
14.	U Aung Aung	Villager
15.	U Nay Win Htike	Villager

Attendant List :		
Sr.	Name	Position
16.	U Min Naing	Villager
17.	Mg Zin min thant	Villager
18.	U Han Myint	Villager
19.	U Htay Win	Villager
20.	U Hla Win Aung	Villager
21.	U Tun Ngwe	Villager
22.	U Win Khaing	Villager
23.	U Kyaw Linn Aung	Villager
24.	U Wunna Mg Mg	Villager
25.	U Thet Oo	Villager
26.	U Saw	Villager
27.	U Nyo Mine	Villager
28.	U Htun Kyi	Villager
29.	U Win Shwe	Villager
30.	U Maung Htay	Villager
31.	U Chit Own	Villager
32.	U Maung Pu	Villager
33.	Daw Cho Cho Wai	Villager
34.	Daw Htay	Villager
35.	U Tin Own	Villager

3.1.9

Meeting Minutes of Nant Thar Pu Village

Detail	
Project	EIA for Myint & Associates Offshore Supply Base
Venue	Chapel
Township	Nant Thar Pu Village, Ayeyarwady region.
Objective	EIA Disclosure
Date	March 15, 2018 (Thursday)
Time	1:00 AM to 3:00 PM
Attendee List	91

Discussion (Questions and Answers)
<p>Question U Kyi Aye (Kywe-Chaing)</p> <ul style="list-style-type: none"> • Could you provide the project's location before the EIA Study? • How will the potential impacts on fishermen be identified? • Why was the EIA study only in Nanttharpuu village? • Why did ERM exclude other villages? • We would like to know the distance of the EIA study from the village. <p>Answered by U Tint Swe (Executive Director, MPRL E&P GOCs)</p> <ul style="list-style-type: none"> • We are planning to start our project in January 2019. In the first phase, the project area will be about 30 acres and will increase to 40 acres for the next phase. Total area will be between 60 and 70 acres. The EIA study is the role of third party, ERM. The EIA must be undertaken for every operation. The EIA study area distance around the site is 5km. <p>Answered by U Myo Zaw Thant (Senior Engineer, M&A OSB)</p> <ul style="list-style-type: none"> • If there is an accident in this project such as leakage of oil and gas, the replacement and resettlement procedures will be conducted urgently. The Emergency Response Plan in our HSE policy will be continued. <p>Answered by Daw Myat Mon Swe (Senior Consultant, ERM)</p> <ul style="list-style-type: none"> • The EIA study has to be undertaken within a specific time frame. You can study all the procedures in the Myanmar EIA procedure 2015. We have to select sample points considering limitations such as time, work-done etc. We have to conduct this EIA according to EIA procedures, which is why we have explained the EIA process to you. <p>Response by Daw Nant Cho Pyone</p> <ul style="list-style-type: none"> • This consultation meeting seems to have skipped so many steps. For example, local people did not know what CSR was until now. Company must take the responsibility to explain everything. Please could you explain more? <p>Answered by U Tint Swe Swe (Executive Director, MPRL E&P GOCs)</p> <ul style="list-style-type: none"> • I would like to apologise if there have been misunderstandings. The main reason why we came today here is to explain the Environmental Impact Assessment. <p>Replied by Daw Nant Cho Pyone</p> <ul style="list-style-type: none"> • Please also explain the CSR strategy.

Discussion (Questions and Answers)

Answered by U Tint Swe (Executive Director, MPRL E&P GOCs)

- U Tint Swe explained CSR to the meeting room. CSR starts when the project is initiated. In the Mann oil field, we had been conducting our CSR strategy for 22 years and there have been many lessons learnt during this process. If something happens, all related persons have to take action and take the responsibility to solve the problem.

Suggested by U Aye Kyaw, Kywe Gyaing Villager

- There is a need for a centre for us to raise any complaints so we can solve any upcoming problems.

Question: Daw Nant Cho Pyone.

- How many times did you meet with the local community concerning with EIA?

Answered by Daw Myat Mon Swe, ERM,

- We met with the local community on January 16, 2017, a second time between February and March and a third time, concerning air and water monitoring. In total we have met with stakeholders eight times including baseline surveys and public consultations.

Question 3. Asked by Ko Than Zaw Lay

- In this EIA disclosure, it is stated that only 34 species were found in terms of fish species. Actually, we know that there are more than 200 species around this area. Sharks are also here but they mentioned that they didn't find any. In my opinion, this study is not detailed enough.

Answered by Daw Myat Mon Swe, ERM

- The fish species we presented is what we found at the baseline biodiversity's survey period. In the literature, there are more than 200 species.

Suggested by Ko Nay Tar

- A Nan Ta Pu villager said that they don't like this project because they feel that they, the Nan Tha Pu people, are concerned with the pros and cons of this project. Other villages (such as Kywe Gyaing) have always disturbed the meetings that were held in Nan Tha Pu village. They came with bad points of view. Therefore, there is a need to separate these villagers in future meetings.

Photos



Registration session



Attendents



Explanation by U Tint Swe



Explanation by U Myo Zaw Thant



Explanation by Daw Myat Mon Swe



Explanation by Daw Kyi Sin Htet Aung

Photos



Question by U Kyi Aye



Question by Daw Nant Cho Pyone



Question by Than Zaw Lay



Explanation CSR

Attendant List :

Sr.	Name	Position/address
1.	U Phyo Wai	Kyauk pyar
2.	Ma Hnin Su Linn	Nga yoke kaung
3.	U Htun Kywe	
4.	U Taing phay	
5.	U Chit Oo	Ale kone
6.	Daw Shwe Than	
7.	Daw Win Win Than	Zin yaw gyaung
8.	Ma Hnin Hnin Aye	
9.	U Aung Gyi	Sate Kam
10.	U Aung Ko Minn	Nan Ta pu
11.	Daw Kyi Aye	
12.	Ma Arr San	
13.	Ko Htun Htun Oo	Gyaing Ka lay
14.	Daw Mya Mya	
15.	U Htun Htun	Ale kone

Attendant List :		
Sr.	Name	Position/address
16.	U Aung Kyaw Htun	Kywe Gyaing
17.	U Kyi Aye	Kywe Gyaing
18.	Ma San Htwe	
19.	Ma Nan Cho Win	
20.	U Myo Ko Naing	
21.	Ma Khin Mar Aye	Ale kone
22.	Daw Moe Thu Zar	Kyauk pyar
23.	Daw Nant Noe lar	Kyauk pyar
24.	Ma Thin Myat Htun	Nga yoke kaung
25.	U Phyo Lwin Oo	Nga yoke kaung
26.	U Nyan Htun Linn	
27.	Daw Nan	
28.	U Aung Aung	Kyauk pyar
29.	U Kaung myat san	Sate kam
30.	U Ye Kyaw Thu	Ale kone
31.	U Shwe Daing Linn	Nan Ta pu
32.	U Htun Lwin	Nan Ta pu
33.	U Moe Kyaw	Nan Ta pu
34.	U Nyein Chan	
35.	Daw Khin Ye	
36.	U chin Htoo	
37.	Daw Win Sandar	
38.	Daw Aye Aye Win	
39.	Daw Nant Cho Pyone	
40.	Daw Nant Aye Cho	
41.	Daw Nu Yin	Ale kone
42.	Ko Chit Ka lay	Ale kone
43.	Daw Kyu Kyu	Nan Ta Pu
44.	U Tun Shwe	Gyaing lay
45.	Ma Nyo	
46.	Mg Thet Naung	Gyaing Lay
47.	Daw Kaw Yoke	Kyauk Pyar
48.	Daw Yin Yin Nu	Ale kone
49.	Daw Khin San Myint	Kyauk Pyar
50.	Daw Si Si Win	Ale kone
51.	U Man Pyi Taw Aye	
52.	U Mya Kyan	
53.	U Tin Oo	
54.	U Zaw Min Lay	
55.	Daw Than win	Sate kam
56.	U Thein Win	Sate kam
57.	U Man thit	Ale kone

Attendant List :		
Sr.	Name	Position/address
58.	Daw Saw Ngwe	Kyauk Pyar
59.	Daw Taung Kyi	
60.	U Aung Soe	Gyaing Lay
61.	Daw Nant Yin Yin Htike	Nan Ta Pu
62.	Daw Nant Thin Kyu	Nan Ta Pu
63.	U Thein Soe	Nan Ta Pu
64.	U Aye Kyaw	Nan Ta Pu
65.	U Zayar Thein	Nan Ta Pu
66.	Daw Ei Ei Phyo	Gyaing lay
67.	U Min Nyunt	Ale kone
68.	Daw kyi ya Aung	Gyaing lay
69.	Daw Nant Aye Mi Cho	Gyaing lay
70.	Daw maw saw phalar htoo	Ale kone
71.	U Yan Naing Oo	Nan Ta Pu
72.	U Henry	Ale kone
73.	U Mya Than Htun	Ale kone
74.	U phoe Ate	Sate kam
75.	U Myo Thaw	Zin Yaw Gyaung
76.	Daw Nan Myint Myint Aye	Nan Ta Pu
77.	Daw Pu Si	
78.	Daw Moe Moe	
79.	U Khin Kyaw Oo	
80.	Daw Nant Than Than Htwe	Kyauk pyar
81.	U Htun Lwe	Kyauk Pyar
82.	U Hay Myo San	Ale kone
83.	U Ba Win Kyi	Gyaing Lay
84.	Ma Yin Hla	
85.	U Than Zaw Lay	Kyauk pyar
86.	U Soe Myint	Kyauk pyar
87.	Daw Nu Nu Lwin	Ale kone
88.	Ma Lin Lin Soe	Kyauk Pyar
89.	Daw Nay Zar	Kywe Gyaing
90.	Daw Nant Marlar	Nan Ta Pu
91.	U Saw Ngwe	Nan Ta Pu

3.1.10

Meeting Minutes of Parliament Meeting

Detail	
Project	EIA for Myint & Associates Offshore Supply Base
Venue	Parliament Meeting Office
Township	Patheingyi Township, Ayeyarwady region.
Objective	EIA Disclosure
Date	March 16, 2018
Time	1:00 PM to 3:00 PM
Attendee List	16

Discussion (Questions and Answers)
<p>Question: How did you acquire land? How many acres is the project area? How have you discussed with local people? How are you conserving the coral reefs?</p> <p>Answered: M&AOSB</p> <ul style="list-style-type: none"> We have ~30 acres of land to be acquired including three acres of garden land, 12.17 acres of farmland, and 14 acres of other land. We bought the garden land at current land prices from local people. Our investment on land acquisition is USD three million until now. We have permits from the central committee. However, we are waiting to get a permit for 14 acres of other land. We have another 20 acres, which have been bought for an additional phase. The total land area we now have is nearly 50 acres. We submitted to MIC with 30 acres for project areas. We have already prepared the EIA report and already submitted to the ECD. If we get an Environmental Compliance Certificate (ECC), we are planning to start construction in January 2019. We hope the permit for the other land (14 acres) will be received at this time. <p>Question: Hluttaw representative: Are the other land free land or Form 7?</p> <p>Answered by M&AOSB:</p> <ul style="list-style-type: none"> The other land are free land. However, the extra 20 acres of land that we bought are farmland. We hope the total project area will be nearly 70 acres. <p>Answered by Daw Myat Mon Swe, ERM</p> <ul style="list-style-type: none"> At the public disclosure meeting in Yangon, we discussed with Daw Day Ve Thant Sin (Myanmar Green Network) and other NGOs, CSOs about this EIA. Their main concern was around building trust with the local people and transparency. We discussed with CSOs in Patheingyi. Their concern was about how ERM is related to MPRL (M&A OSB). According to the results of the meeting, the local community didn't have any concerns about coral reefs. They only had concerns about the CSR policy. In this meeting we were shown some additional fish species that were present in the area. This information was very useful for us and we welcomed the local people's contributions. We will revise and update this new information in our EIA. <p>Question: Hluttaw representative</p> <ul style="list-style-type: none"> How do you plan on obtaining the required energy if construction starts?

Discussion (Questions and Answers)

Answered by U Tint Swe.

- In the long-term, we plan to use a generator for our energy requirements. As we are using solar energy for lighting.

Question: Hluttaw representative asked about employment opportunities?

Answered by U Tint Swe (Executive Director, MPRL E&P GOCs)

- The Chief Minister of Ayeyarwady region has said that regional governments would collect the lists of graduates from three Technological universities. We then have to create employment opportunities for them. Most graduates have limited opportunities due to the lack of projects. We have planned to interview the graduates from this region and give jobs to qualified people. We are planning to start our project in January 2019.
- At the start our project, we will have 80 labourers from M&A OSB and may need more than 200 labourers for the first phase. For the main construction phase, we will need 400-700 labourers. Concerning the employment opportunities of this project, we will use local people. We focused on education in order to improve skill development through our CSR programs. We will run this project as a 30 year (long-term) project.

Additional Comment

- How do you plan to use the water supply if construction starts? If the jetty is 10m high, what kinds of ship will use this OSB? Could you show the layout plan of the project?

Answered by U Myo Zaw Thant

- We obtain water in three different ways; firstly by using treated sea water, secondly by using ground water (which may affect the surrounding environment) and thirdly by constructing a reservoir. The best options for us is treated sea water.
- The ship that we use is 8m high (max 10m and 13000 tonnes).
- In terms of layout plan, we are modifying the layout plan but I can explain if you want using the image in the presentation.

How do you plan to mitigate any noise from construction, it may disturb tourists? What is the EIA study distance? How will you dispose of waste water?

Answered by ERM

- We will install a noise barrier (you can see the noise barrier near Shwegonedaing bridge in Yangon) in order to mitigate noise impacts. Good maintenance of equipment will mean it will have less of an effect on the surrounding environment.
- The EIA study distance is 5km from the project site.
- In terms of wastewater, they will install a water treatment plant in accordance with the EMP.

Photos



Attendant List :

Sr.	Name	Position
1.	U Tin Swe	Executive Director, MPRL E&P
2.	Daw Kyisin Htin Aung	Corporate Affairs Manager, MPRL E&P
3.	U Myo Zaw Thant	Senior Engineer, M&A OSB
4.	U Myo Zaw Oo	Senior Officer, MPRL E&P
5.	Daw Myat Mon Swe	Senior Consultant, ERM
6.	Aung Soe Min	Assistant Consultant
7.	U Aung Kyaw Khaing	President of Parliament
8.	U San Min Aung	Vice President of Parliament
9.	Dr. Soe Thein	Regional 1
10.	U Bo Bo Zin	Regional 2
11.	U Soe Khaing	Member of Parliament
12.	U Khaing Win	Member of Parliament
13.	U Wai Yan Tun	Member of Parliament
14.	U Aung Naing Tun	Member of Parliament
15.	Daw Yee Yee Tun	Member of Parliament
16.	U Phyo Zaw Shwe	Member of Parliament

Annex (A)

(Invitation List and Card)

Invitation List (Yangon)

No.	Name / Organization	Mail	Contacts
Government			
1.	Daw Khin Thida Tin / ECD	Director	09 255801255
2.	Myanmar Port Authority	E-mail : mpa@mptmail.net.mm, mpa-sad@mptmail.net.mm	Tel: +95-1 382722, 384732, 384738 Fax: +95-1 295134, 256321, 256336, 391355, 246781
3.	U Thant Zin, Department of Fishery		
NGOs			
4.	Biodiversity And Nature Conservation Association	banca@yangon.net.mm	667067
5.	EcoDev	ecodev@myanmar.com.mm; winmyothu@gmail.com	500464
6.	Ecosystem Conservation and Community Development Initiative	eccdi.myanmar@mptmail.net.mm, eccdi.mm@gmail.com	510902; 504225
7.	Environmental and Economic Research Institute		245762,249152,395512 246634,652236,6252237, Ext 102
8.	Fauna & Flora International	frank.momberg.fifi@gmail.com	01667067
9.	Forest Resource Environment Development & conversation Association	fredamyanmar@gmail.com	01243827
10.	Friends of Rainforests in Myanmar	form.myanmar@gmail.com	01503671
11.	Global Green Group	3g.globalgreen@gmail.com	01374714 09-2450211
12.	Green Memo	greenmemo9@gmail.com	01 66 55 42
13.	Green Nature Group	gnature21@gmail.com wincho1020@gmail.com	09-8033554
14.	International Commission of Jurists (Geneva based NGO)	seanjbainwork@gmail.com	09-263533230
15.	Mangrove and Environmental Rehabilitation Network	mern.myanmar@gmail.com , mernmyanmar@goldenland.com.mm	554254
16.	Marine Science Association Myanmar	msam1973@gmail.com, tinttun@gmail.com	513165, 095417527
17.	Myanmar Centre for Responsible Business (MCRB)	vicky.bowman@myanmar-responsiblebusiness.org	09 448011895
18.	Water, Research and Training Centre	wrtcmyan@gmail.com aiweb.lead@gmail.com	09 511 1880 0943154667
19.	Wildlife Conservation Society	wcsmm@mptmail.net.mm/	524893, 512984

No.	Name/ Organization	Mail	Contacts
		wcsmp@myanmar.com.mm	
20.	Youth Empowerment Association	rocketphilo@gmail.com	09 513 2285;535049; 549654
21.	Myanmar Fisheries Federation	fishfedmyanmar@gmail.com info@fishfedmyanmar.com fishfed.mff@gmail.com	095-1-683652, 095-1- 683653, 095-1-683657, 095-1-683658
22.	Marine Science Association Myanmar	tintwai63@gmail.com	(+95)09420025484 - Tint Wai
23.	Myanmar Environment Rehabilitation- Conservation Network (MENR)	mern.myanmar@gmail.com	(+95) 09 33608339, 09 448016358
24.	Biodiversity and Nature Conservation Association (BANCA)		banca@yangon.net.mm
25.	U Saw Htun, Wildlife Conservation Society - Myanmar Program	sawhtunwcs@gmail.com	P: +95 1 524893/ 512984 F: +95 1 512838 M: +95 9 254079030
26.	U Ohn (Chairman), Forest Resource Environment Development And Conservation Association (FRED A)	freda@mptmail.net.mm , fredamyanmar@gmail.com	Phone: 01-243827
27.	Donald Kyaw Hla, Mangrove Services Network	dkyawhla@gmail.com	0973213356(office) 0943024157, 0973152702
Media			
28.	MRTV-4	enquiry.mrtv4@gmail.com MRTV Compound ပြည်လမ်း ရန်ကုန်မြို့	+01 2399444
29.	7days news		01 513 515
30.	Myanmar Times News	No.379/383, Bo Aung Kyaw Street, Kyauktada Township Yangon	01 392 928
31.	Global New Light of Myanmar	#150, Ngar Htat Gyi Pagoda Street, Bahan Township Yangon 11201	01 860 4529

Invitation List (Ayeyarwady)

Invitation List in Ayeyarwady
Government Offices
General Administration Department (District, Township, local village leader)
Environmental Conservation Department (ECD)
Department of Fishery
Department Agriculture Land Management and Statistic
Department of Agriculture
Department of Forestry
Parliament Member (House of Representatives)
Parliament Member (House of nationalities)
CSOs
NGOs
Fishermen
Media
Local People/ Interest people

Invitation card



ဖိတ်ကြားလွှာ

Myint & Associates Offshore Supply Base Ltd. (M&AOSB) သည် မြန်မာနိုင်ငံ၊ ဧရာဝတီတိုင်းဒေသကြီး၊ ငရုပ်ကောင်း ပင်လယ်အော်အနီးတွင် ကမ်းလွန်ထောက်ပို့ရေးစခန်းတစ်ခုအား တည်ဆောက်ရန် ရည်ရွယ်လျက် ရှိပါသည်။

ဤစီမံကိန်းဆောင်ရွက်ရာတွင် မြန်မာနိုင်ငံ၏ ပတ်ဝန်းကျင်ထိန်းသိမ်းရေးဥပဒေ (၂၀၁၂)၊ ပတ်ဝန်းကျင်ထိန်းသိမ်းရေး နည်းဥပဒေ (၂၀၁၄)နှင့် ပတ်ဝန်းကျင်ထိခိုက်မှုဆန်းစစ်ခြင်းဆိုင်ရာလုပ်ထုံးလုပ်နည်း(၂၀၁၅) တို့အရ ပတ်ဝန်းကျင် ထိခိုက်မှုဆန်းစစ်ခြင်း (EIA) အား Environmental Resources Management -ERM နှင့် Resource and Environment Myanmar (REM) တို့မှ M&AOSB ကိုယ်စား ဆောင်ရွက်ခဲ့ပြီး ပတ်ဝန်းကျင်ထိခိုက်မှုဆန်းစစ်ခြင်း အစီရင်ခံစာအား သံယံဇာတနှင့်သဘာဝပတ်ဝန်းကျင်ထိန်းသိမ်းရေးဝန်ကြီးဌာနသို့ တင်ပြခဲ့ပြီးဖြစ်ပါသည်။

ပတ်ဝန်းကျင်ထိခိုက်မှုဆန်းစစ်ခြင်းတွင် တစ်ခုအပါအဝင်ဖြစ်သော ပတ်ဝန်းကျင်ထိခိုက်မှုဆန်းစစ်ခြင်းအစီရင်ခံစာ၏ စီမံကိန်းအကျဉ်းချုပ် ထုတ်ပြန်ခြင်းနှင့် သက်ဆိုင်ရာ စီမံကိန်းနှင့် ပတ်သက်ဆက်နွယ်သူများနှင့် တွေ့ဆုံ၍ သတင်းအချက်အလက်များ ဖြန့်ဝေမည့် ဆွေးနွေးပွဲအား အောက်ပါအတိုင်း ကျင်းပပြုလုပ်သွားမည်ဖြစ်ပါသဖြင့် ကြွရောက်ပေးပါရန် လေးစားစွာဖြင့် ဖိတ်ကြားအပ်ပါသည်။

နေ့ရက်။ ။ ။ ၂၀၁၈ခုနှစ်၊ မတ်လ (၈)ရက် (ကြာသာပတေးနေ့)
 အချိန်။ ။ နံနက် ၁၀:၀၀ မှ ၁၂:၀၀ နာရီထိ
 နေရာ။ ။ Vantage Tower၊ ၆၂၊ ပြည်လမ်း၊ ကမာရွတ်မြို့နယ်၊ ရန်ကုန်မြို့။

Annex (B)

(Presentation and Factsheets)



**မြိုင်အင်(နီ)အဆိုစီရိုက်(စ်)
ကမ်းလွန်ဝန်ဆောင်မှုလုပ်ငန်းဆိုင်ရာ
ပတ်ဝန်းကျင်ထိခိုက်မှု ဆန်းစစ်ခြင်း**


ရှင်းလင်းသင်ပြသူ - ERM နှင့် Myint & Associates
Offshore Supply Base Ltd (M&AOSB)

နေ့စွဲ - ဤစာတမ်းကို ဖတ်လ (၈)ရက် နှင့် (၁၂) နာရီ
အတွင်း

© Copyright 2018 by ERM and Associates. This presentation is subject to ERM's and Associates' terms and conditions of use. All rights reserved. No part of this presentation may be reproduced or transmitted in any form or by any means, electronic or mechanical, including photocopying and recording, or by any information storage or retrieval system, without prior written permission from ERM and Associates.

MAOSB
Myint & Associates Offshore Supply Base

ERM
The business of sustainability



EIA for Myint & Associates Offshore Supply Base

Presented by: ERM and Myint & Associates Offshore Supply Base Ltd (M&A)


Date: 8th March and 12th to 16th 2018

© Copyright 2018 by ERM and Associates. This presentation is subject to ERM's and Associates' terms and conditions of use. All rights reserved. No part of this presentation may be reproduced or transmitted in any form or by any means, electronic or mechanical, including photocopying and recording, or by any information storage or retrieval system, without prior written permission from ERM and Associates.

MAOSB
Myint & Associates Offshore Supply Base

ERM
The business of sustainability


အစီအစဉ်



- စီမံကိန်းအကြောင်းနှင့် စီမံကိန်းဆောင်ရွက်သူတို့အား မိတ်ဆက်ခြင်း
- ERM ကုမ္ပဏီအကြောင်းအား မိတ်ဆက်ခြင်း
- ပတ်ဝန်းကျင်ထိခိုက်မှုဆန်းစစ်ခြင်း(EIA) လေ့လာမှုများမှ ရလဒ်များကို တင်ပြခြင်း
- ဖြစ်နိုင်ခြေရှိသောထိခိုက်မှုများနှင့် လျော့ချနိုင်မည့်နည်းလမ်းများအပေါ် ဖြန့်ချိသုံးသပ်ချက်
- စီမံကိန်းဆောင်ရွက်သူတို့အား မည်သို့ဆက်သွယ်နိုင်ရန်
- အရေးအကြီးကဏ္ဍ

www.erm.com EIA for Myint & Associates Offshore Supply Base 28/03/2018 2

Agenda

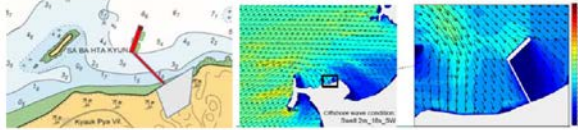


- Information on the Project and Developer
- Information about ERM
- Results from EIA Study
- Overview of the Potential Impacts and Mitigation
- How to contact the Developer
- Question and Answer Session

www.erm.com EIA for Myint & Associates Offshore Supply Base 28/03/2018 2

ဒီဇိုင်းရွေးချယ်ခြင်း

ဆိပ်ကမ်းဒီဇိုင်းအားအောက်ဖော်ပြပါ နည်းလမ်းများအပေါ်အခြေခံ၍ ရွေးချယ်ခဲ့ပါသည်။



❖ Bathymetric Data (Water Depth) ❖ Meteorological Data (Waves)

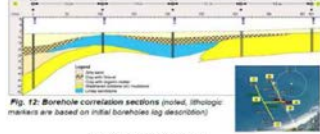
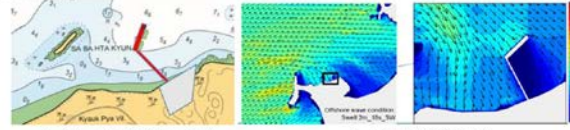


Fig. 12: Borehole correlation sections (noted, lithologic markers are based on initial boreholes log description)

❖ Geotechnical Data

Design Selection

The jetty design is selected on the basis of the technical parameters as shown below.



❖ Bathymetric Data (Water Depth) ❖ Meteorological Data (Waves)

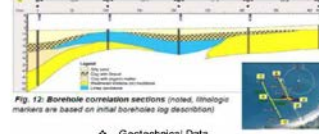


Fig. 12: Borehole correlation sections (noted, lithologic markers are based on initial boreholes log description)

❖ Geotechnical Data

ဒီဇိုင်းရွေးချယ်ခြင်း

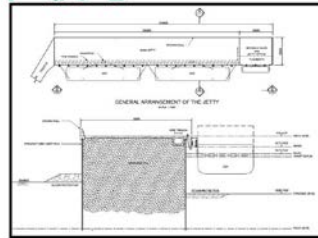


Fig. Jetty Design (236m)



Fig. Causeway Design (350m)



အနစ်ဇွတ်

Gravity Type Cofferdam ကို ရွေးချယ်ခဲ့ခြင်းမှာ

- ၁) Sheltered Berth ခံနိုင်ရည်ရှိခြင်း
- ၂) Hard Soil Condition မှာ အနစ်ဇွတ်ကို တည်ဆောက်ခြင်း

Design Selection

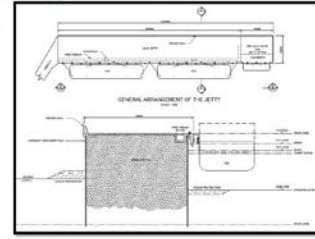


Fig. Jetty Design (236m)

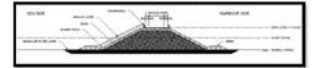


Fig. Causeway Design (350m)



Conclusion

A gravity type cofferdam structure is selected as it is:

- ❖ Creating Sheltered Berth
- ❖ Creates less impact during construction in view of the hard soil condition

ကင်မရာချမှတ်ခြင်းလေ့လာခြင်း

လေ့လာရေးကာလ

- ၂၀၁၇ခုနှစ်၊ စက်တင်ဘာလ (ပိုးရာသီ)

လေ့လာရေးတွင် အသုံးပြုသည့်နည်းလမ်းများ

- ကင်မရာကို ၅ မီနစ်ကြာနှုန်းမြင့်နှုန်းမြင့် လေ့လာခြင်း
- စုစုပေါင်း ၆၀နာရီချမှတ်ခြင်း စစ်ဆေးလေ့လာ ခဲ့ပါသည်။

လေ့လာမှုရလဒ်များ

- ပင်လယ်ရေအောက်ကြမ်းပြင်သည် သိန်းချို့ တိုသာအများဆုံးပါဝင်နေသည်ကိုတွေ့ရှိရပါသည်။
- အဆိုပြုဆောင်ရွက်မည့်စိတ်တားဆန့်ရာနှင့် ဆောင်ရွက်မည့် ခရီးယာများတွင် မည်သည့်သတ္တဝါမျိုးမျှ မတွေ့ရှိရပါ။



Drop Camera Surveys

Survey Period:

- Sep 2017 (Wet Season)

Survey Methodology:

- The camera was deployed for a period of ~5 minutes
- A total of six spot checks were conducted

Survey Results:

- The seabed is mainly composed of sand and mud
- No corals were identified at the proposed jetty or dredging area



ရေပေါ်၌ လေ့လာခြင်း

လေ့လာရေးကာလ

- ၂၀၁၇ခုနှစ်၊ စက်တင်ဘာလ (ပိုးရာသီ)

လေ့လာရေးတွင် အသုံးပြုသည့်နည်းလမ်းများ

- ကမ်းခြေနှင့်ပူး၍ ရေကူးစက်၍လေ့လာခြင်း
- စီတာ ၂၀၀ အနက်တွင် မှတ်တမ်းယူခြင်း
- ပင်လယ်ရေအောက်ကိုယ်စားပြု နို့ဒီယံနှင့် ဓာတ်ပုံမှတ်တမ်းများကိုယူ၍ မှတ်တမ်းတင်ခြင်း

လေ့လာမှုရလဒ်များ

- T1 တွင် သတ္တဝါမျိုးအများဆုံး ၅% မှ ၁၀% ခန့် ဖုံးလွှမ်းနေသည်ကို လေ့လာတွေ့ရှိရပါသည်။
- T2: တွင် သတ္တဝါမျိုးအများဆုံး ၅၁% မှ ၇၅% ခန့် ဖုံးလွှမ်းနေသည်ကို လေ့လာတွေ့ရှိရပါသည်။
- T3: တွင် သတ္တဝါမျိုးအများဆုံး ၇၆% မှ ၁၀၀% ခန့် ဖုံးလွှမ်းနေသည်ကို လေ့လာတွေ့ရှိရပါသည်။



Snorkel Surveys

Survey Period:

- Sep 2017 (Wet Season)

Survey Methodology:

- Free-swims parallel to the shore
- Recorded as 200m transects
- Representative underwater video footage and photographs were recorded

Survey Results:

- T1: Hard Coral 5-10% coverage
- T2: Hard Coral 51-75% coverage
- T3: Hard Coral 76-100% coverage





လူမှုပတ်ဝန်းကျင်

- **ရွာထောင်များ** - မိမိကလေး စစ်သမားများ၏ လေ့ကျင့်ခန်း အားလပ်ရက်ရှိ နံနက် ၈ နာရီခန့်လောက် ရွာထောင်ကြည့်သင့်သည်။
- **အထောက်အကူဆောင်ကြဉ်းရန်လိုအပ်** - မိမိရရှိလိုသည့် မိမိ၏လုပ်ငန်း
- **အထောက်အကူဆောင်ကြဉ်းရန်လိုအပ်** - လူတို့ကောင်းမှု နှင့် နှစ်ခြင်း ဆောင်ရွက် စားသောက်ခြင်းများကို မျှော်လင့် တစ်ခုချင်းစီ ဖောင်းနှင့်သွားလာရမည်သည်။
- **အောက်သို့လေ့ကျင့်** - လေ့ကျင့်သည့် ရက်စွဲများကို ရရှိကြသည်။



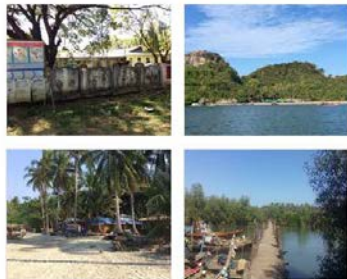
Social Setting

- **Name of Villages:** Seik Kann, Zin Yaw Chaung, Kyauk Phyar, Ale Gone, Nant Thar Pu and Gyaing Galay
- **Livelihood:** Rice cultivation and fishing are the most typical livelihoods
- **Local Infrastructure:** One hour drive to Hospital and High School in Nga Yoke Kaung. Drinking water is provided from wells.



လူမှုပတ်ဝန်းကျင်

- **ခရီးသွားလေ့အရ** - အခါအခါများ၍ ဂျပန်နိုင်ငံတံခွန်ပြောင်းသက် (ဝဿ) ဝါးလိုသိသာတွင် ငွေထောင်ကမ်းခြေနှင့် အနောက်နှင့် အနောက်ဘက်သက် (၅ ဝေ) ဝါးလိုသိသာတွင် ခေါ်ရန်ရှာဖွေကြည့်ကြပါသည်။
- **ယဉ်ကျေးမှုအဖွဲ့အစည်း** - နိုင်ငံတော်ခရီးသည် ၃ ဂရုတ်လိုသိသာအတွက် ခေါ်ရန်ရှာဖွေကြည့်ကြပါသည်။ ထွက်ပေးကုန်အစုံ (ပြောင်းလဲမှု) ဝေ ထွက်ပေးသည်။



Social Setting

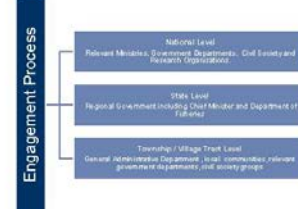
- **Tourism:** The two main areas are Ngwe Saung Beach, located approximately 140 km north and Goyangyi Island, 5-10 km west and southwest of the Project.
- **Cultural heritage:** Pagoda in Goyangi Island 3.5 km from Project Area



လူထုတွေ့ဆုံညှိနှိုင်းစေွေးနွေးခြင်း



Stakeholder Engagement



လူထုတွေ့ဆုံညှိနှိုင်းဆွေးနွေးခြင်း - နယ်ပယ်တိုင်းတာသည့်အဆင့်

[illegible]

Stakeholder Consultation – Scoping Phase

Date of Consultation	Stakeholder(s) Consulted
16 January 2017	<ul style="list-style-type: none"> Pathein and Nga Pu Daw Minister of Electricity and Transport in Pathein Chief Minister office Nga Pu Daw Township GAD
17 January 2017	<ul style="list-style-type: none"> Nga Yoke Kaung Nga Yoke Kaung Township GAD
18 January 2017	<ul style="list-style-type: none"> Non Thor Pu village Tract Zin Yaw Chaung Village Gu Chaung Village
18 January 2017	<ul style="list-style-type: none"> Nga Yoke Kaung and Project Area Site visit to Project Area, Goyangyi Island and Nga Yoke Kaung bay



လူထုတွေ့ဆုံညှိနှိုင်းဆွေးနွေးခြင်း - EIA စုံစမ်းစစ်ဆေးခြင်း

တွေ့ဆုံညှိနှိုင်းမည့်နေ့ရက်	လူထုတွေ့ဆုံညှိနှိုင်းမည့်နေရာ
၂၀၁၇ ခုနှစ်၊ ဖေဖော်ဝါရီလ ၂၈ ရက်	လူထုတွေ့ဆုံညှိနှိုင်းမည့်နေရာ
၂၀၁၇ ခုနှစ်၊ မတ်လ ၃ ရက်	နယ်လူထုတွေ့ဆုံညှိနှိုင်းမည့်နေရာ
၂၀၁၇ ခုနှစ်၊ မတ်လ ၂ ရက်	စင်စစ်စစ်ချက်နှင့် လုပ်ငန်းစဉ်
၂၀၁၇ ခုနှစ်၊ မတ်လ ၃ ရက်	နယ်လူထုတွေ့ဆုံညှိနှိုင်းမည့်နေရာ



Stakeholder Consultation – EIA Investigation

Date of Consultation	Stakeholder(s) Consulted
28 February 2017	Nga Pu Daw • Nga Pu Daw Township GAD
3 March 2017	Nan Thar Pu Village Tract • Nan Thar Pu Village
2 March 2017	Nga Yoke Kaung and Goyangyi Island • Site visit to Project Area, Goyangyi Island and Nga Yoke Kaung Bay
3 March 2017	Nan Thar Pu Village Tract • Villagers and CSO in Nan Thar Pu



လူမှုရေးစိုးရိမ်မှုများ



စိုးရိမ်မှုများ	ဖြေရှင်းချက်များ
စီမံကိန်းများ လုပ်ဆောင်ရာတွင် (CSR) နှင့် လူမှုရေးစိုးရိမ်မှုများ ထည့်သွင်းမည်	စီမံကိန်းများတွင် အကျိုးပြုမှုများ ပါဝင်စေမည်
စီမံကိန်း၏ လုပ်ငန်းစဉ်များတွင် သဘာဝပတ်ဝန်းကျင်ထိခိုက်မှုများ ထည့်သွင်းမည်	စီမံကိန်းများတွင် သဘာဝပတ်ဝန်းကျင်ထိခိုက်မှုများ ထည့်သွင်းမည်
သဘာဝပတ်ဝန်းကျင်ထိခိုက်မှုများ အလုပ်အကိုင် အခွင့်အလမ်းများ	လုပ်ငန်းစဉ်များတွင် အလုပ်အကိုင် အခွင့်အလမ်းများ ထည့်သွင်းမည်
သဘာဝပတ်ဝန်းကျင်ထိခိုက်မှုများ ကာကွယ်ဆေးကုသမှုများ ထည့်သွင်းမည်	ကာကွယ်ဆေးကုသမှုများ ထည့်သွင်းမည်
လေ့ကျင့်မှုများ ထည့်သွင်းမည်	လေ့ကျင့်မှုများ ထည့်သွင်းမည်
လူမှုရေးစိုးရိမ်မှုများ ထည့်သွင်းမည်	လူမှုရေးစိုးရိမ်မှုများ ထည့်သွင်းမည်

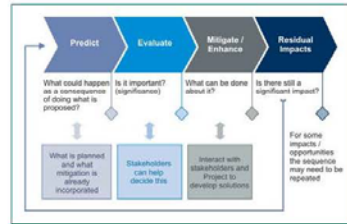
Concerns raised during Consultation



Concerns	Response
Corporate Social Responsibility (CSR) and Social Investment from the Project	Should the Project develop, M&A will consider CSR in more detail
Projects impacts on fishing grounds by increase of traffic in the region when vessels use the OSB	There will be no exclusion area around the jetty
Job opportunities for local communities	There will be opportunities for jobs during the construction and the majority of the workforce
Potential impact to sensitive offshore habitats such as coral reefs	Offshore habitat surveys were conducted.
Air and noise impacts	The impact assessment for air and noise was included in the EIA and mitigation measures were outlined
Disclosure of information to CSOs	CSOs were invited to the public engagement meetings

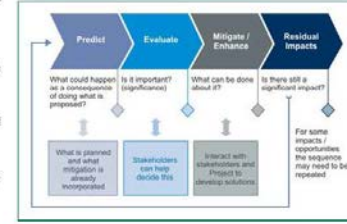
ထိခိုက်မှုဆန်းစစ်ခြင်း

- ထိခိုက်မှုဆန်းစစ်ခြင်း၏ ရည်ရွယ်ချက်မှာ စီမံကိန်း၏ အကျိုးသက်ရောက်မှုကို လေ့လာဆန်းစစ်ရာတွင် အရေးကြီးသော အချက်အလက်များကို ဖော်ထုတ်နိုင်ရန်နှင့် ထိုအချက်အလက်များကို အသုံးပြု၍ သင့်လျော်သော အရေးယူမှုများကို ရှာဖွေနိုင်ရန်ဖြစ်သည်။
- ထိခိုက်မှုဆန်းစစ်ခြင်း၏ အကျိုးသက်ရောက်မှုမှာ စီမံကိန်း၏ အကျိုးသက်ရောက်မှုကို လေ့လာဆန်းစစ်ရာတွင် အရေးကြီးသော အချက်အလက်များကို ဖော်ထုတ်နိုင်ရန်နှင့် ထိုအချက်အလက်များကို အသုံးပြု၍ သင့်လျော်သော အရေးယူမှုများကို ရှာဖွေနိုင်ရန်ဖြစ်သည်။
- သက်တောင့်သက်သာရှိမှုဆိုင်ရာ အကျိုးသက်ရောက်မှုများကို လေ့လာဆန်းစစ်ရာတွင် အရေးကြီးသော အချက်အလက်များကို ဖော်ထုတ်နိုင်ရန်နှင့် ထိုအချက်အလက်များကို အသုံးပြု၍ သင့်လျော်သော အရေးယူမှုများကို ရှာဖွေနိုင်ရန်ဖြစ်သည်။
- ထိခိုက်မှုဆန်းစစ်ခြင်း၏ ရည်ရွယ်ချက်မှာ စီမံကိန်း၏ အကျိုးသက်ရောက်မှုကို လေ့လာဆန်းစစ်ရာတွင် အရေးကြီးသော အချက်အလက်များကို ဖော်ထုတ်နိုင်ရန်နှင့် ထိုအချက်အလက်များကို အသုံးပြု၍ သင့်လျော်သော အရေးယူမှုများကို ရှာဖွေနိုင်ရန်ဖြစ်သည်။



Impact Assessment

- Impact prediction** to determine what could potentially happen to resources/receptors as a consequence of the Project and its associated activities.
- Impact evaluation** to evaluate the significance of the predicted impacts by considering their magnitude or likelihood of occurrence (for unplanned events), and the sensitivity, value and/or importance of the affected resource/receptor.
- Mitigation and enhancement** to identify appropriate and justified measures to mitigate negative impacts and enhance positive impacts.
- Residual impact evaluation** to evaluate the significance of impacts assuming effective implementation of mitigation and enhancement measures.



ထိခိုက်မှုဆန်းစစ်ခြင်းနည်းလမ်း

ဥပမာ - သစ်လမ်းဆွဲဆောင်ရွက်မှု၏ အကျိုးသက်ရောက်မှုဆိုင်ရာ သက်တောင့်သက်သာရှိမှုဆိုင်ရာ အကျိုးသက်ရောက်မှုများကို ဆန်းစစ်ခြင်း

Magnitude of Impact	Sensitivity/Vulnerability/Importance of Resource/Receptor			
	Low	Medium	High	
Negligible	Negligible	Negligible	Negligible	Negligible
Small	Negligible	Minor	Moderate	
Medium	Minor	Moderate	Major	
Large	Moderate	Major	Major	

Impact	Behavioral disturbance and / or injury to marine fauna from underwater noise emissions from piling		
Impact Nature	Negative	Positive	Neutral
Impact Nature	The impact will have a negative impact on marine fauna.		
Impact Type	Direct	Indirect	Induced
Impact Type	Sedimentation is an indirect impact.		
Impact Duration	Temporary	Short-term	Long-term
Impact Duration	Impacts would be short-term for the duration of piling activities.		
Impact Extent	Local	Regional	International
Impact Extent	Impacts will occur on the local scale and are localized to a few kilometers from the Project site.		
Impact Extent	Impacts from noise will only occur a few kilometers from the activity.		
Impact Extent	The indirect impact is expected to occur only during the piling works.		
Impact Extent	Positive	Negligible	Small
Impact Extent	The magnitude of the impacts would be considered to be small as impacts from noise can only occur a few kilometers from the activity and only short-term during piling activities.		
Impact Extent	Low	Medium	High
Impact Extent	Marine mammals and turtles will be highly sensitive and fish are medium sensitivity.		
Impact Extent	Negligible	Minor	Moderate
Impact Extent	Minor impacts may occur to fish species and moderate impacts to marine mammals and turtles.		

Impact Assessment

Example: Impacts to Marine Fauna from Underwater Noise – Construction Phase

Magnitude of Impact	Sensitivity/Vulnerability/Importance of Resource/Receptor			
	Low	Medium	High	
Negligible	Negligible	Negligible	Negligible	Negligible
Small	Negligible	Minor	Moderate	
Medium	Minor	Moderate	Major	
Large	Moderate	Major	Major	

Impact	Behavioral disturbance and / or injury to marine fauna from underwater noise emissions from piling		
Impact Nature	Negative	Positive	Neutral
Impact Nature	The impact will have a negative impact on marine fauna.		
Impact Type	Direct	Indirect	Induced
Impact Type	Sedimentation is an indirect impact.		
Impact Duration	Temporary	Short-term	Long-term
Impact Duration	Impacts would be short-term for the duration of piling activities.		
Impact Extent	Local	Regional	International
Impact Extent	Impacts will occur on the local scale and are localized to a few kilometers from the Project site.		
Impact Extent	Impacts from noise will only occur a few kilometers from the activity.		
Impact Extent	The indirect impact is expected to occur only during the piling works.		
Impact Extent	Positive	Negligible	Small
Impact Extent	The magnitude of the impacts would be considered to be small as impacts from noise can only occur a few kilometers from the activity and only short-term during piling activities.		
Impact Extent	Low	Medium	High
Impact Extent	Marine mammals and turtles will be highly sensitive and fish are medium sensitivity.		
Impact Extent	Negligible	Minor	Moderate
Impact Extent	Minor impacts may occur to fish species and moderate impacts to marine mammals and turtles.		

www.elsevier.com/locate/jmb. For full text, please visit the journal website at www.elsevier.com/locate/jmb

Account	Debit	Credit
1000 Cash		1000
1010 Accounts Receivable	1000	
1020 Inventory		1000
1030 Prepaid Insurance		1000
1040 Equipment		1000
1050 Accumulated Depreciation		
2000 Accounts Payable		1000
2010 Notes Payable		1000
2020 Long-Term Debt		1000
2030 Equity		1000
2040 Retained Earnings		1000
2050 Dividends	1000	
3000 Sales		1000
3010 Cost of Sales	1000	
3020 Operating Expenses	1000	
3030 Non-Operating Expenses		
3040 Income Tax Expense		
3050 Net Income		1000
4000 Dividends	1000	
4010 Retained Earnings		1000
4020 Dividends	1000	
4030 Retained Earnings		1000
4040 Dividends	1000	
4050 Retained Earnings		1000
4060 Dividends	1000	
4070 Retained Earnings		1000
4080 Dividends	1000	
4090 Retained Earnings		1000
4100 Dividends	1000	
4110 Retained Earnings		1000
4120 Dividends	1000	
4130 Retained Earnings		1000
4140 Dividends	1000	
4150 Retained Earnings		1000
4160 Dividends	1000	
4170 Retained Earnings		1000
4180 Dividends	1000	
4190 Retained Earnings		1000
4200 Dividends	1000	
4210 Retained Earnings		1000
4220 Dividends	1000	
4230 Retained Earnings		1000
4240 Dividends	1000	
4250 Retained Earnings		1000
4260 Dividends	1000	
4270 Retained Earnings		1000
4280 Dividends	1000	
4290 Retained Earnings		1000
4300 Dividends	1000	
4310 Retained Earnings		1000
4320 Dividends	1000	
4330 Retained Earnings		1000
4340 Dividends	1000	
4350 Retained Earnings		1000
4360 Dividends	1000	
4370 Retained Earnings		1000
4380 Dividends	1000	
4390 Retained Earnings		1000
4400 Dividends	1000	
4410 Retained Earnings		1000
4420 Dividends	1000	
4430 Retained Earnings		1000
4440 Dividends	1000	
4450 Retained Earnings		1000
4460 Dividends	1000	
4470 Retained Earnings		1000
4480 Dividends	1000	
4490 Retained Earnings		1000
4500 Dividends	1000	
4510 Retained Earnings		1000
4520 Dividends	1000	
4530 Retained Earnings		1000
4540 Dividends	1000	
4550 Retained Earnings		1000
4560 Dividends	1000	
4570 Retained Earnings		1000
4580 Dividends	1000	
4590 Retained Earnings		1000
4600 Dividends	1000	
4610 Retained Earnings		1000
4620 Dividends	1000	
4630 Retained Earnings		1000
4640 Dividends	1000	
4650 Retained Earnings		1000
4660 Dividends	1000	
4670 Retained Earnings		1000
4680 Dividends	1000	
4690 Retained Earnings		1000
4700 Dividends	1000	
4710 Retained Earnings		1000
4720 Dividends	1000	
4730 Retained Earnings		1000
4740 Dividends	1000	
4750 Retained Earnings		1000
4760 Dividends	1000	
4770 Retained Earnings		1000
4780 Dividends	1000	
4790 Retained Earnings		1000
4800 Dividends	1000	
4810 Retained Earnings		1000
4820 Dividends	1000	
4830 Retained Earnings		1000
4840 Dividends	1000	
4850 Retained Earnings		1000
4860 Dividends	1000	
4870 Retained Earnings		1000
4880 Dividends	1000	
4890 Retained Earnings		1000
4900 Dividends	1000	
4910 Retained Earnings		1000
4920 Dividends	1000	
4930 Retained Earnings		1000
4940 Dividends	1000	
4950 Retained Earnings		1000
4960 Dividends	1000	

	1	2	3	4	5	6	7	8	9	10	11	12	13	14	15	16	17	18	19	20	21	22	23	24	25	26	27	28	29	30	31	32	33	34	35	36	37	38	39	40	41	42	43	44	45	46	47	48	49	50	51	52	53	54	55	56	57	58	59	60	61	62	63	64	65	66	67	68	69	70	71	72	73	74	75	76	77	78	79	80	81	82	83	84	85	86	87	88	89	90	91	92	93	94	95	96	97	98	99	100	101	102	103	104	105	106	107	108	109	110	111	112	113	114	115	116	117	118	119	120	121	122	123	124	125	126	127	128	129	130	131	132	133	134	135	136	137	138	139	140	141	142	143	144	145	146	147	148	149	150	151	152	153	154	155	156	157	158	159	160	161	162	163	164	165	166	167	168	169	170	171	172	173	174	175	176	177	178	179	180	181	182	183	184	185	186	187	188	189	190	191	192	193	194	195	196	197	198	199	200	201	202	203	204	205	206	207	208	209	210	211	212	213	214	215	216	217	218	219	220	221	222	223	224	225	226	227	228	229	230	231	232	233	234	235	236	237	238	239	240	241	242	243	244	245	246	247	248	249	250	251	252	253	254	255	256	257	258	259	260	261	262	263	264	265	266	267	268	269	270	271	272	273	274	275	276	277	278	279	280	281	282	283	284	285	286	287	288	289	290	291	292	293	294	295	296	297	298	299	300	301	302	303	304	305	306	307	308	309	310	311	312	313	314	315	316	317	318	319	320	321	322	323	324	325	326	327	328	329	330	331	332	333	334	335	336	337	338	339	340	341	342	343	344	345	346	347	348	349	350	351	352	353	354	355	356	357	358	359	360	361	362	363	364	365	366	367	368	369	370	371	372	373	374	375	376	377	378	379	380	381	382	383	384	385	386	387	388	389	390	391	392	393	394	395	396	397	398	399	400	401	402	403	404	405	406	407	408	409	410	411	412	413	414	415	416	417	418	419	420	421	422	423	424	425	426	427	428	429	430	431	432	433	434	435	436	437	438	439	440	441	442	443	444	445	446	447	448	449	450	451	452	453	454	455	456	457	458	459	460	461	462	463	464	465	466	467	468	469	470	471	472	473	474	475	476	477	478	479	480	481	482	483	484	485	486	487	488	489	490	491	492	493	494	495	496	497	498	499	500	501	502	503	504	505	506	507	508	509	510	511	512	513	514	515	516	517	518	519	520	521	522	523	524
--	---	---	---	---	---	---	---	---	---	----	----	----	----	----	----	----	----	----	----	----	----	----	----	----	----	----	----	----	----	----	----	----	----	----	----	----	----	----	----	----	----	----	----	----	----	----	----	----	----	----	----	----	----	----	----	----	----	----	----	----	----	----	----	----	----	----	----	----	----	----	----	----	----	----	----	----	----	----	----	----	----	----	----	----	----	----	----	----	----	----	----	----	----	----	----	----	----	----	----	-----	-----	-----	-----	-----	-----	-----	-----	-----	-----	-----	-----	-----	-----	-----	-----	-----	-----	-----	-----	-----	-----	-----	-----	-----	-----	-----	-----	-----	-----	-----	-----	-----	-----	-----	-----	-----	-----	-----	-----	-----	-----	-----	-----	-----	-----	-----	-----	-----	-----	-----	-----	-----	-----	-----	-----	-----	-----	-----	-----	-----	-----	-----	-----	-----	-----	-----	-----	-----	-----	-----	-----	-----	-----	-----	-----	-----	-----	-----	-----	-----	-----	-----	-----	-----	-----	-----	-----	-----	-----	-----	-----	-----	-----	-----	-----	-----	-----	-----	-----	-----	-----	-----	-----	-----	-----	-----	-----	-----	-----	-----	-----	-----	-----	-----	-----	-----	-----	-----	-----	-----	-----	-----	-----	-----	-----	-----	-----	-----	-----	-----	-----	-----	-----	-----	-----	-----	-----	-----	-----	-----	-----	-----	-----	-----	-----	-----	-----	-----	-----	-----	-----	-----	-----	-----	-----	-----	-----	-----	-----	-----	-----	-----	-----	-----	-----	-----	-----	-----	-----	-----	-----	-----	-----	-----	-----	-----	-----	-----	-----	-----	-----	-----	-----	-----	-----	-----	-----	-----	-----	-----	-----	-----	-----	-----	-----	-----	-----	-----	-----	-----	-----	-----	-----	-----	-----	-----	-----	-----	-----	-----	-----	-----	-----	-----	-----	-----	-----	-----	-----	-----	-----	-----	-----	-----	-----	-----	-----	-----	-----	-----	-----	-----	-----	-----	-----	-----	-----	-----	-----	-----	-----	-----	-----	-----	-----	-----	-----	-----	-----	-----	-----	-----	-----	-----	-----	-----	-----	-----	-----	-----	-----	-----	-----	-----	-----	-----	-----	-----	-----	-----	-----	-----	-----	-----	-----	-----	-----	-----	-----	-----	-----	-----	-----	-----	-----	-----	-----	-----	-----	-----	-----	-----	-----	-----	-----	-----	-----	-----	-----	-----	-----	-----	-----	-----	-----	-----	-----	-----	-----	-----	-----	-----	-----	-----	-----	-----	-----	-----	-----	-----	-----	-----	-----	-----	-----	-----	-----	-----	-----	-----	-----	-----	-----	-----	-----	-----	-----	-----	-----	-----	-----	-----	-----	-----	-----	-----	-----	-----	-----	-----	-----	-----	-----	-----	-----	-----	-----	-----	-----	-----	-----	-----	-----	-----	-----	-----	-----	-----	-----	-----	-----	-----	-----	-----	-----	-----	-----	-----	-----	-----	-----	-----	-----	-----	-----	-----	-----	-----	-----	-----	-----	-----	-----	-----	-----	-----	-----	-----	-----	-----	-----	-----	-----	-----	-----	-----	-----	-----	-----	-----	-----	-----	-----	-----	-----	-----	-----	-----	-----	-----	-----	-----	-----	-----

[www.ck12.org](#) EW Dr Myrtille Associates | CRM.com Support Desk PAGE 20

[illegible]

Potential Impacts	Proposed Mitigation Measures	Impact Significance
Terrestrial habitat loss	<ul style="list-style-type: none"> Footprint of the proposed OSB is minimised during the design stage and existing vegetation shall be retained as far as practicable Landscape planning will be implemented by planting native tree species which are fast growing in nature Construction activities will be restricted to works areas that will be clearly demarcated. 	Minor
Community health and safety, increased risk of accidents, security issues for public.	<ul style="list-style-type: none"> There will be a perimeter wall around the premises to stop anyone trespassing onto the site. MSA will also provide navigation guidance to all vessels in line with Myanmar national requirements As discussed in other sections on vessel movements, MSA will provide regular communications to fishermen on vessel movements as required. Traffic Management Plan to be developed to minimize traffic related impacts. Vessel movements should be discussed with Port Authority as appropriate to ensure minimal disturbance to ongoing operations and reduce the risk of marine accidents. 	Moderate
Livelihoods and economy, Job creation, fishing impacts.	<ul style="list-style-type: none"> Jetty and vessels will be appropriately lit with good navigation warning devices, including navigation lights, area lighting, navigation/communications equipment and radar reflectors to provide sufficient warning to other vessels in the area At least four weeks prior to construction activities, relevant authorities and stakeholders (i.e. local fishing and tourism operators, fishery/tourism associations, and local villagers) will be alerted to the final works area design as well as the construction programme and any specific restrictions. 	Positive (job creation) Minor (negative fishing)

[illegible]

Potential Impacts	Proposed Mitigation Measures	Impact Significance
Occupational health and safety	<ul style="list-style-type: none"> The Project will design an occupational health and safety management plan which will be a subset of the overall EMP system, tailored to the needs of the project. The Project will create and implement a health and safety management system for the project. 	Minor
Impacts to tourism / nuisance / restriction of access to beach	<ul style="list-style-type: none"> Mitigation measures provided above. 	Moderate
Impact to people and environment from waste discharge and disposal	<ul style="list-style-type: none"> Impacts regarding wastes can be managed by good house-keeping practices for waste storage and handling supported by a comprehensive waste management plan (WMP) which will be prepared by MMA. Construction materials will be managed in a way to avoid over-ordering, poor storage and maintenance, mishandling as well as improper operation procedures. Segregated wastes will be temporarily stored at designated areas for reuse on site. Waste will be collected regularly by reputable waste collectors. 	Minor
Impact from spill and leaks	<ul style="list-style-type: none"> Standard Operating Procedures for handling / storage / transfer of hazardous materials; Shutdown Oil Spill Emergency Plans (MARPOL requirement) for larger vessels, M&A Supply Base Oil Spill Response Plan and associated response procedures / protection measures for spills. 	Minor

အကျဉ်းချုပ်



- ပတ်ဝန်းကျင်ဆိုင်ရာအန္တရာယ်ကြိုတင် (EIA) ကို ပြန်လည်ပတ်ဝန်းကျင်ဆိုင်ရာအန္တရာယ်ဆိုင်ရာ လုပ်ငန်းစဉ်များနှင့် (၂၀၁၅) ခု ဇူလိုင်လအထိဆောင်ရွက်သောဆောင်ရွက်လုပ်ကိုင်ပါသည်။
- ထိခိုက်သက်ရောက်မှုများကို ပြန်လည်စစ်ဆေး နှင့် နိုင်ငံတကာစံနှိုင်းနှင့်မညီညွတ်သည့်ဆိုင်ရာများအပေါ်၌ ဆန်းစစ်လေ့လာလုပ်ကိုင်ပါသည်။
- ဆောင်ရွက်ရန်လိုအပ်သည့် ထိခိုက်သက်ရောက်မှုကိုတော့သည်အထိ နှင့် ထိခိုက်မှုအပေါ်ဆုံးဖြတ်စေရန်စုစည်းရန် ဆောင်ရွက်ခြင်း ဖြစ်ပါသည်။
- ထိခိုက်မှုလျော့ချစေရန်လမ်းမများသည် သက်ဆောင်ရာများအားလုံးကိုလျော့ချနိုင်စေရန် ဆုံးဖြတ်ခြင်းဆောင်ရွက်ပါသည်။
- စီမံကိန်းဆောင်ရွက်သူတို့သည် လုပ်ငန်းစဉ်များအပေါ် စောင့်ကြည့်လေ့လာခြင်းနှင့် စွဲလမ်းစွာဆောင်ရွက်မှုအပေါ် လိုအပ်သလို ဆောင်ရွက်သွားပါသည်။
- စီမံကိန်းသက်တမ်းအတွက်ကော်မရှင်တို့သည်အခြေခံအားဖြင့် ဆောင်ရွက်သွားမည်ဖြစ်ပါသည်။
- မည်သည့်ကိစ္စရပ်မျိုးစုံမဆို ထိခိုက်စွန့်စားမှုများအပေါ် ကိုင်ကြည့်ရာမှစ၍ စီမံကိန်းဆောင်ရွက်သူများက ဆောင်ရွက်လေ့ရှိသကဲ့သို့ ဖြစ်ပါသည်။

Summary



- EIA has been undertaken following the **Myanmar EIA Procedures (2015)**
- Impacts have been assessed against **Myanmar Laws** and International Standards / Guidelines
- EIA identified **no major impacts**, with the majority being minor
- Mitigation Measures have been identified to **reduce** all impacts
- Proponent will **monitor** emissions and discharges and take action as necessary
- Consultation** will continue throughout the lifetime of the Project
- Proponent will implement a **Grievance Mechanism** to address any concerns

ထုတ်ပြန်ချက်



- M&AOSB ဝင်ဘဲဆိုင်း : <http://myintassociatesosb.com>
- သတင်းစာ (ကလောင်နမူနာလိုက်မိပြန်မှ နှင့် ကြေးမုံ)
- စီမံကိန်းနေရာတွင် သဘောတရားဖြင့်လည်းကောင်း
- မြန်မာဘာသာဖြင့် စီမံကိန်းအကျဉ်းချုပ်မိတ္တူကူးလည်း ပေးနိုင်၊
ဓမ္မစာ၊ ဓမ္မဝင်ကောင်းနှင့် နဲ့ဘားပြန်နယ်
- အထွေထွေအချက်အလက်များအားသို့ ပေးမည်ဖြစ်ပါသည်။
- သတင်းအချက်အလက်ထုတ်ပြန်သည့် အလုပ်ရုံဆွေးနွေးပွဲ
ကူးလည်း ရန်ကုန်မြို့နှင့်လိုင်ကောင်း ဗြိ. ယူကောင်၊ မောင်ရွှေကို
ဘာသာပြန်ပါသည်။



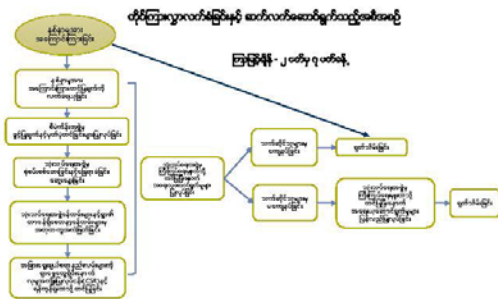
Disclosure



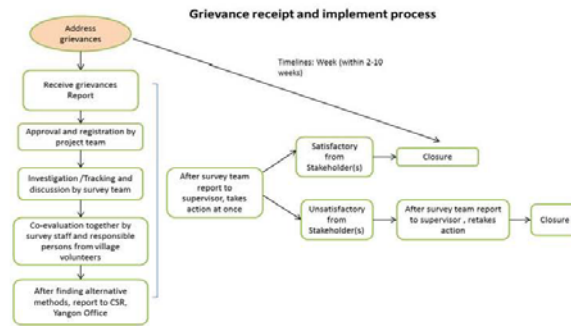
- M&A website : <http://myintassociatesosb.com>
- Newspapers (The Global New Light of Myanmar and The Mirror)
- Signs posted at the Project Site
- Copies of Myanmar Language Summary Document sent to Pathwin, Ngaputaw, Nga Yoke Kaung, Nan Thar Pu GADs
- Disclosure Workshops in Yangon and Nga Yoke Kaung



ထိခိုက်နစ်နာမှုများကို တိုင်ကြားနိုင်သောယန္တရားစနစ်



Grievance Mechanism



လူမှုတာဝန်သိလုပ်ငန်းများ (CSR)

နည်းလမ်း - လုပ်ငန်းနှင့်ဆက်သွယ်ရသည့် လူမှုစုအဖွဲ့အစည်းများကို တက်ရောက်မှု ရှိစေရန်နှင့် လုပ်ငန်းများ ဆောင်ရွက်ရန်

M&AOSB သည် CSR ကော်မရှင်များဖြင့်သာ မဟုတ်ဘဲ လူမှုစုအဖွဲ့အစည်းများနှင့် ပူးပေါင်းဆောင်ရွက်ရန် ရည်ရွယ်ချက် ရှိပါသည်။



ပညာရေး



လူမှုစုအဖွဲ့အစည်းများနှင့် ပူးပေါင်းဆောင်ရွက်ရန်



M&AOSB Partners with Two Community-Based Volunteers in Nanttharpu

CSR is not Philanthropy or Donation

Corporate Social Responsibility

Strategy: Invest in impactful social programs to create shared value for the business and local communities.

M&AOSB has inaugurated CSR program in education and capacity building:



Education



Community Capacity Building & Skills Development



M&AOSB Partners with Two Community-Based Volunteers in Nanttharpu

CSR is not Philanthropy or Donation




မြိုင်အင်(နီ)အဆိုစီရိတ်(စ်)
ကမ်းလွန်ဝန်ဆောင်မှုလုပ်ငန်းဆိုင်ရာ
ပတ်ဝန်းကျင်ထိခိုက်မှုဆန်းစစ်ခြင်း

သို့သော်လည်းကောင်း၊မြိုင်အင်(နီ)အဆိုစီရိတ်(စ်)ကမ်းလွန်ဝန်ဆောင်မှုလုပ်ငန်းဆိုင်ရာပတ်ဝန်းကျင်ထိခိုက်မှုဆန်းစစ်ခြင်း

စီမံကိန်းအကျဉ်းချုပ်:
 လုပ်ငန်း : ကမ်းလွန်ဝန်ဆောင်မှုလုပ်ငန်းဆိုင်ရာ
 ဇုန်း : ၁၂၈၀၂၂၂
 အိတ်စီအေ : myint@myintassociates.com

ERM:
 ဇုန်း : ၁၂၈၀၂၂၂
 အိတ်စီအေ : myintmon.swe@erm.com

The business of sustainability


EIA for Myint & Associates Offshore Supply Base

To provide comments please use the following contact details:

Proponent:
 Address: Vantage Tower, Pyay Road, Yangon.
 Phone: +86 1 230 7722
 Email: myintfeedback@myintassociates.com

ERM:
 Phone: 012304405
 Email: myintmon.swe@erm.com

The business of sustainability



မြင့်အင်(န်)အဆိုစီရိတ်(စ်) ကမ်းလွန်ဝန်ဆောင်မှုလုပ်ငန်းဆိုင်ရာ ပတ်ဝန်းကျင်ထိခိုက်မှုဆန်းစစ်ခြင်း

မြင့်အင်(န်)အဆိုစီရိတ်(စ်)ကမ်းလွန်ဝန်ဆောင်မှုလုပ်ငန်းသည် ငရုပ်ကောင်းမြို့နယ်တွင် ဆောင်ရွက်မည့် ကမ်းလွန်ဝန်ဆောင်မှုလုပ်ငန်းအတွက် ပတ်ဝန်းကျင် ထိခိုက်မှုဆန်းစစ်ခြင်း (EIA) ကို ဆောင်ရွက်ခဲ့ပြီး ဖြစ်ပါသည်။

မြင့်အင်(န်)အဆိုစီရိတ်(စ်)ကမ်းလွန်ဝန်ဆောင်မှုလုပ်ငန်းမှ Environmental Resource Management (ERM) အား ပတ်ဝန်းကျင်ထိခိုက်မှုဆန်းစစ်ခြင်း (EIA)ဆိုင်ရာ လေ့လာခြင်း အတွက် တာဝန်ပေးအပ်ခဲ့ပြီး ပတ်ဝန်းကျင်ထိခိုက်မှုဆန်းစစ်ခြင်းအစီရင်ခံစာအား သယံဇာတနှင့်သဘာဝပတ်ဝန်းကျင်ထိန်းသိမ်းရေး ဝန်ကြီးဌာနသို့ တင်ပြခဲ့ပြီးဖြစ်ပါသည်။



- ✚ ကမ်းလွန်ထောက်ပံ့ရေးအခြေစိုက်စခန်းသည် ဧရာဝတီတိုင်းဒေသကြီး၊ ငရုပ်ကောင်းမြို့တွင် တည်ရှိပါသည်။
- ✚ စီမံကိန်းတွင် သေးငယ်သော ကုန်းပတ် ပါဝင်သည့် ဆိပ်ခံဘေးတံတား၊ တာလမ်းနှင့် လိုအပ်သည့် ကုန်းတွင်း အခြေခံ အဆောက်အအုံများ (အဓိက ထောက်ပံ့ရေးအခြေစိုက်စခန်း) တို့ ပါဝင်ပါသည်။
- ✚ အဓိကအားဖြင့် ကမ်းလွန်ထောက်ပံ့ရေးအခြေစိုက်စခန်း (ကုန်းတွင်းပိုင်း) တွင် သိုလှောင်ရုံများ၊ ကုန်တင်ကုန်ချ စစ်ဆေးရေးဧရိယာ၊ အလုပ်ရုံဧရိယာ၊ လူနေအဆောက်အအုံ ဧရိယာနှင့် အခြားအသုံးပြုမှုများပါဝင်မည် ဖြစ်ပါသည်။

ဖြစ်ပေါ်လာနိုင်သည့် ထိခိုက်မှုများ	ပတ်ဝန်းကျင်ထိခိုက်လွယ်မှု	ထိခိုက်မှုပမာဏ	ကြွယ်ကုန်ထိခိုက်မှု၏ အရေးပါမှု
လေထုထွင်းထုတ်လွတ်မှုကြောင့် လေအရည်အသွေးထိခိုက်မှုများ၊ (လုပ်ငန်းလည်ပတ်ကာလ)	အလယ်အလတ်ဖြစ်သော	နိမ့်ပါးသော	အရေးမပါသော
အသံဆူညံမှု (တည်ဆောက်ရေးနှင့် လုပ်ငန်းလည်ပတ်ကာလ)	အလယ်အလတ်ဖြစ်သော	နိမ့်ပါးသော	အရေးမပါသော
ရေအရည်အသွေးနှင့် အရင်းအမြစ်များအပေါ် ထိခိုက်မှုများ၊ (တည်ဆောက်ရေးနှင့် လုပ်ငန်းလည်ပတ်ကာလ)	နိမ့်ပါးသော	နိမ့်ပါးသော	အရေးမပါသော
အမှိုက်များ သိုလှောင်ခြင်း၊ စွန့်ပစ်ခြင်းများ နှင့် မတော်တဆဖြစ်ရပ်များကြောင့် ခြေညစ်ညမ်းမှုများ (တည်ဆောက်ရေးနှင့် လုပ်ငန်းလည်ပတ်ကာလ)	အလယ်အလတ်ဖြစ်သော	နိမ့်ပါးသော	အရေးမပါသော
ရေနေသတ္တဝါစီမံခန့်ခွဲမှုများအပေါ် ထိခိုက်မှု (တည်ဆောက်ရေးနှင့် လုပ်ငန်းလည်ပတ်ကာလ)	ကြီးမားသော	နိမ့်ပါးသော	အတန်အသင့်ဖြစ်သော
လေထုညစ်ညမ်းခြင်းနှင့် ဆူညံသံများကြောင့် စေ့ငွေပန်းကွင်းနှင့် လုပ်ငန်းဆိုင်ရာ ကျန်းမာရေးနှင့်လုံခြုံရေး ထိခိုက်မှုများ (တည်ဆောက်ရေးနှင့် လုပ်ငန်းလည်ပတ်ကာလ)	အလယ်အလတ်ဖြစ်သော	နိမ့်ပါးသော	အရေးမပါသော
စီမံကိန်းကြောင့် အလုပ်အကိုင်အခွင့်အလမ်းတိုးပွားလာခြင်းကြောင့် စီးပွားရေးနှင့် အသက်မွေးမှုဆိုင်ရာ ထိခိုက်သက်ရောက်မှုများ (ကောင်းကျိုး/ဆိုးကျိုး) (တည်ဆောက်ရေးနှင့် လုပ်ငန်းလည်ပတ်ကာလ)	အလယ်အလတ်ဖြစ်သော	နိမ့်ပါးသော	အရေးမပါသော (လမ်းပန်း)
	မရှိရှိပါ	မရှိရှိပါ	အပြည့်သဘောတရားသော (အလုပ်အကိုင်များ)
ရေလုပ်ငန်းနှင့်စရီးသွားလာရေးအပေါ်ထိခိုက်မှုများ (တည်ဆောက်ရေးနှင့် လုပ်ငန်းလည်ပတ်ကာလ)	အလယ်အလတ်ဖြစ်သော	အလယ်အလတ်ဖြစ်သော	အတန်အသင့်ဖြစ်သော
မတော်တဆမှုများကြောင့် သက်ရှိတို့ နေရာဒေသများနှင့် မျိုးစိတ်များအပေါ် ထိခိုက်မှု	အလယ်အလတ်ဖြစ်သော	နိမ့်ပါးသော	အရေးမပါသော

စီမံကိန်းဆိုင်ရာ အချက်အလက်များနှင့်
ပတ်သက်၍ သိလို၍ဖြစ်စေ၊
ဝေဖန်အကြံပြုလို၍ဖြစ်စေ
တစ်ဖက်ပါလိပ်စာအတိုင်း ဆက်သွယ်နိုင်ပါရန် -

အမည်- ဒေါ်ကြည်စင်ထင်အောင်
လိပ်စာ- Vantage Tower ၊ ပြည်လမ်း ကမာရွတ်မြို့နယ်၊ ရန်ကုန်မြို့
ဖုန်း- +၉၅ ၉ ၇၉၄၉ ၃၁၀၁၉
အီးမေးလ်- kyisin.h.aung@mprlexp.com